



Tonga

**FISHERIES (COASTAL COMMUNITIES)
(AMENDMENT) REGULATIONS 2017**



FISHERIES (COASTAL COMMUNITIES) (AMENDMENT) REGULATIONS 2017

Arrangement of Sections

Regulation

1	Short Title and Interpretation.....	5
2	Schedule I amended	5



FISHERIES (COASTAL COMMUNITIES) (AMENDMENT) REGULATIONS 2017

FISHERIES MANAGEMENT ACT 2002

IN EXERCISE of the powers conferred by section 15(1) and 101(2)(b) of the Fisheries Management Act 2002, the Minister responsible for Fisheries makes the following Regulations -

1 Short Title and Interpretation

- (1) These Regulation may be cited as the Fisheries (Coastal Communities) (Amendment) Regulations 2017.
- (2) In these Regulations, the Fisheries (Coastal Communities) Regulations 2009, as amended, shall be referred to as the “Principal Regulations”.

2 Schedule I amended

Schedule I of the Principal Regulations is amended –

- (a) by inserting the following after item 11 of the list of coastal communities –
 - “12 Fafa Coastal Community
 13. Holonga Coastal Community (Tongatapu)
 14. Lapaha Coastal Community
 15. Nukuleka Coastal Community
 16. Pangaimotu Coastal Community (Tongatapu)

17. Ha'atafu Coastal Community
18. 'Utulei Coastal Community
19. 'Utungake Coastal Community
20. Talihau Coastal Community
21. Falevai Coastal Community
22. Koloa Coastal Community
23. 'Eueiki Island (Vava'u)
24. Lape Coastal Community
25. Hunga Coastal Community
26. Ofu Coastal Community
27. Mango Coastal Community
28. Fonoï Coastal Community
29. Matuku Coastal Community"; and

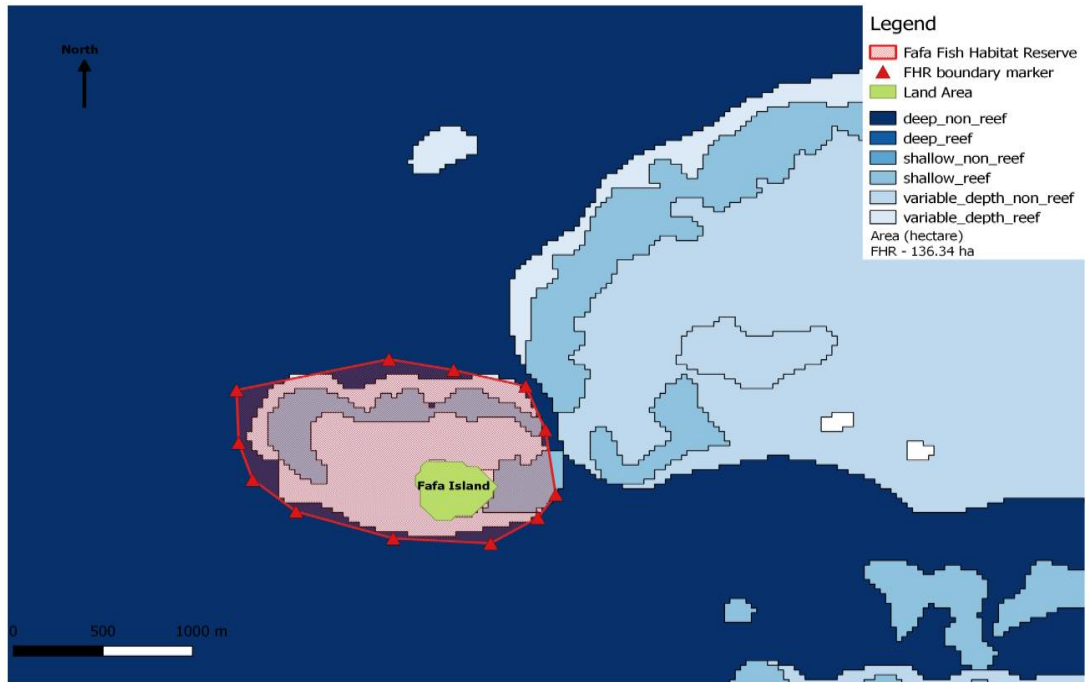
- (2) by inserting the following after the Map of the Kolonga Special Management Area –

“Special Management Area of Fafa Island (Tongatapu)

The areas inside the following straight boundary lines drawn between the Geographical Boundary Points with geographical coordinates outlined in Map 13 of Schedule 1 shall be a Special Management Area and Fish Habitat Reserve:

Point	Latitude	Longitude
1	21 ⁰ 05' 20.24" S	175 09' 14.22" W
2	21 ⁰ 05' 15.51" S	175 09' 10.82" W
3	21 ⁰ 05' 02.62" S	175 09' 14.33" W
4	21 ⁰ 04' 54.70" S	175 09' 17.80" W
5	21 ⁰ 04' 50.27" S	175 09' 30.88" W
6	21 ⁰ 04' 48.18" S	175 09' 43.43" W
7	21 ⁰ 04' 54.82" S	175 10' 12.84" W
8	21 ⁰ 05' 07.35" S	175 10' 00.57" W
9	21 ⁰ 05' 18.80" S	175 10' 00.57" W
10	21 ⁰ 05' 24.79" S	175 09' 42.16" W
11	21 ⁰ 05' 25.60" S	175 09' 23.28" W

MAP 13: Fafa Island Special Management Area



Special Management Area of Holonga (Tongatapu)

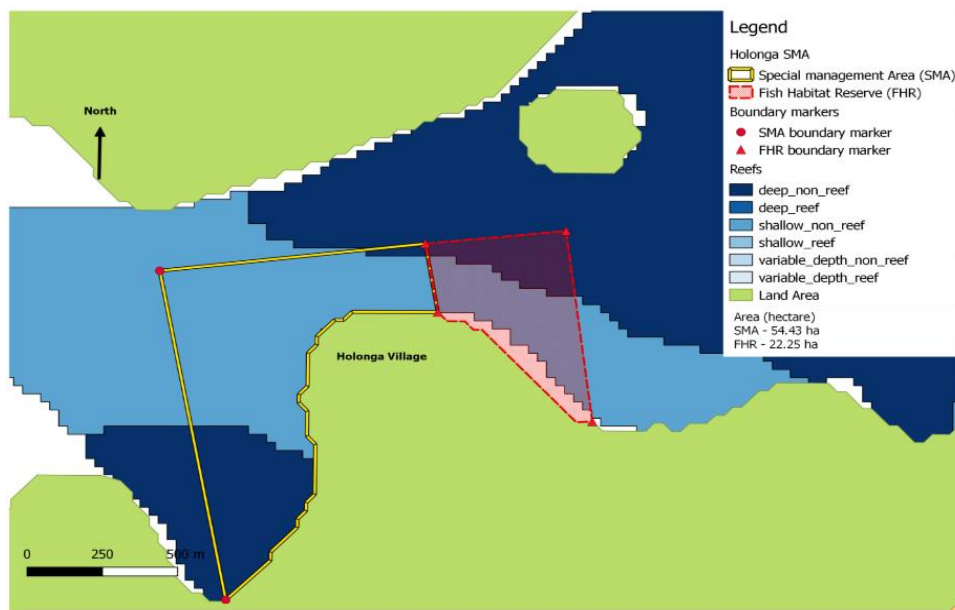
The areas inside the following straight boundary lines drawn between the Geographical Boundary Points with geographical coordinates outlined in Map 14 of Schedule 1 shall be a Special Management Area for purpose of coastal community management:

Point	Latitude	Longitude
1	21°11'48.82"S	175°9'6.44"W
2	21°11'7.30"S	175°9'15.19"W
3	21°11'3.70"S	175°8'44.66"W
4	21°11'1.99"S	175°8'28.47"W
5	21°11'27.18"S	175°8'25.38"W
6	21°11'13.31"S	175°8'43.26"W

The areas inside the following straight boundary lines drawn between the Geographical Boundary Points with geographical coordinates outlined in Map 14 of Schedule 1 shall be Fish Habitat Reserve:

Point	Latitude	Longitude
3	21°11'3.70"S	175°8'44.66"W
4	21°11'1.99"S	175°8'28.47"W
5	21°11'27.18"S	175°8'25.38"W
6	21°11'13.31"S	175°8'43.26"W

MAP 14: Holonga Special Management Area



Special Management Area of Lapaha (Tongatapu)

The areas inside the following straight boundary lines drawn between the Geographical Boundary Points with geographical coordinates outlined in Map 15 of Schedule 1 shall be a Special Management Area for purpose of coastal community management:

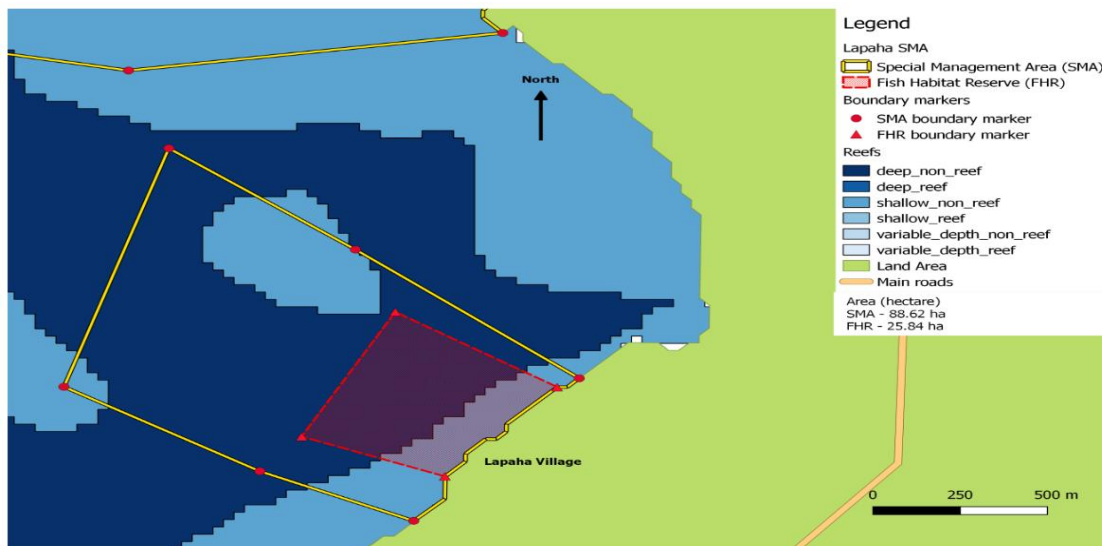
Point	Latitude	Longitude
1	21°10'25.32"S	175° 7'1.54"W
2	21°10'45.97"S	175° 7'18.36"W

3	21°10'37.52"S	175° 7'35.41"W
4	21°10'26.51"S	175° 7'55.03"W
5	21° 9'54.70"S	175° 7'45.00"W
6	21°10'7.95"S	175° 7'26.28"W
7	21°10'24.50"S	175°7'6.90"W
10	21°10'38.15"S	175°7'17.62

The areas inside the following straight boundary lines drawn between the Geographical Boundary Points with geographical coordinates outlined in Map 15 of Schedule 1 shall be a Fish Habitat Reserve:

Point	Latitude	Longitude
7	21°10'24.50"S	175° 7'6.90"W
8	21°10'16.19"S	175° 7'22.22"W
9	21°10'32.86"S	175° 7'31.32"W
10	21°10'38.15"S	175° 7'17.62"W

MAP 15: Lapaha Special Management Area



Special Management Area of Nukuleka (Tongatapu)

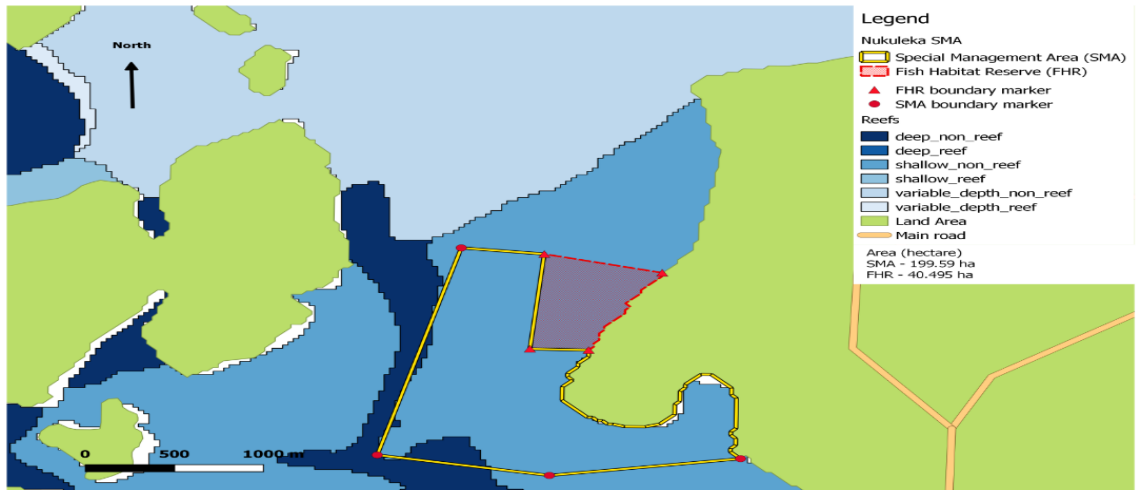
The areas inside the following straight boundary lines drawn between the Geographical Boundary Points with geographical coordinates outlined in Map 16 of Schedule 1 shall be a Special Management Area for purpose of coastal community management:

Point	Latitude	Longitude
1	21°8'30.30"S	175°8'11.24"W
2	21°9'38.68"S	175°8'22.72"W
3	21°9'39.68"W	175°7'11.22"W

The areas inside the following straight boundary lines drawn between the Geographical Boundary Points with geographical coordinates outlined in Map 16 of Schedule 1 shall be a Fish Habitat Reserve:

Point	Latitude	Longitude
1	21°8'44.47"S	175°7'26.27"W
2	21°8'37.25"S	175°7'47.05"W
3	21°9'6.76"S	175°7'53.41"W
4	21°9'6.58"S	175°7'40.74"W

MAP 16: Nukuleka Special Management Area

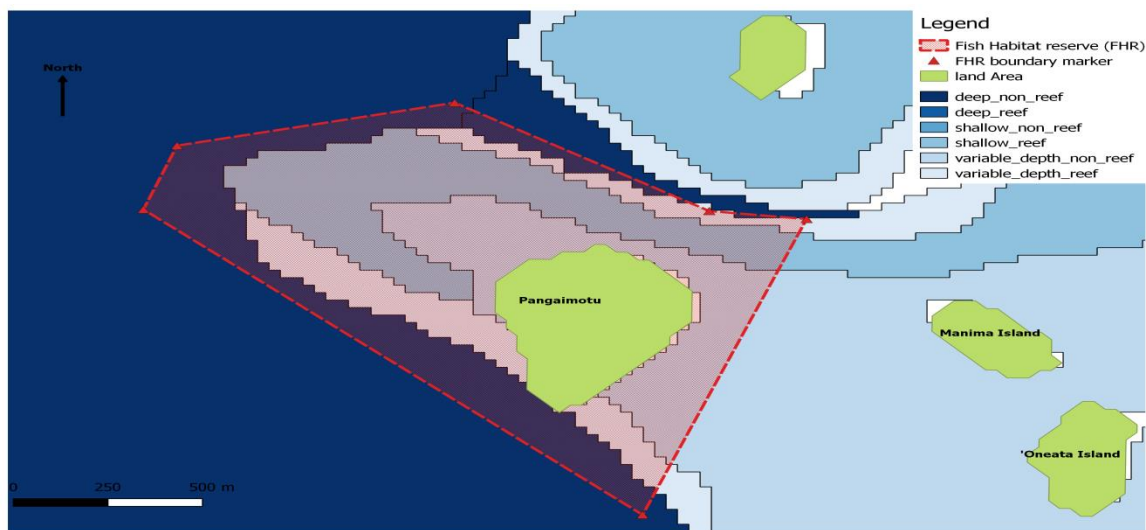


Special Management Area of Pangaimotu Island (Tongatapu)

The areas inside the following straight boundary lines drawn between the Geographical Boundary Points with geographical coordinates outlined in Map 17 of Schedule 1 shall be a Special Management Area and Fish Habitat Reserve:

Point	Latitude	Longitude
1	21° 7'52.25"S	175° 9'26.19"W
2	21° 7'13.48"S	175° 9'11.64"W
3	21° 7'12.53"S	175° 9'20.57"W
4	21° 6'58.64"S	175° 9'44.07"W
5	21° 7'4.52"S	175° 10'9.44"W
6	21° 7'12.89"S	175° 10'12.42"W

MAP 17: Special Management Area of Pangaimotu Island



Special Management Area of Ha’atafu (Tongatapu)

The areas inside the following straight boundary lines drawn between the Geographical Boundary Points with geographical coordinates outlined in Map 18 of Schedule 1 shall be a Special Management Area for purpose of coastal community management:

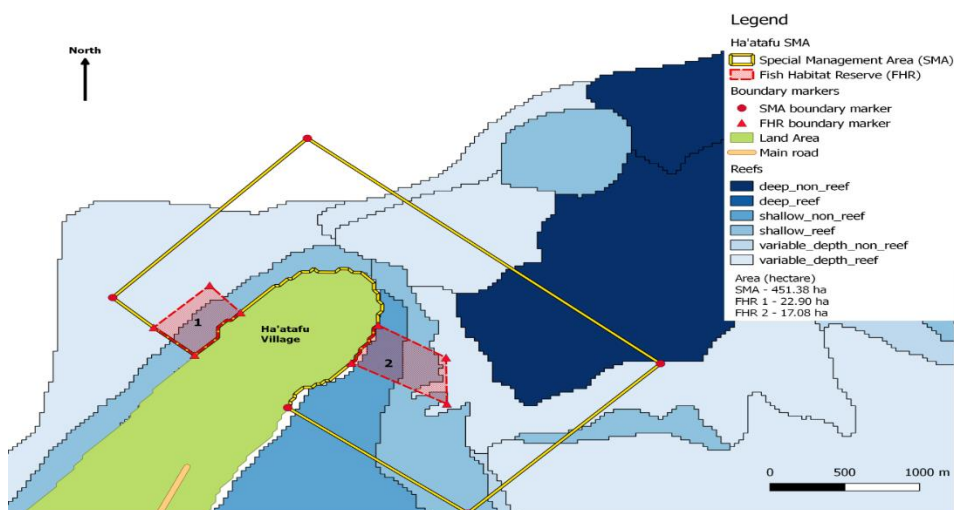
Point	Latitude	Longitude
1	21°4'23.22"S	175°19'44.88"W
2	21°4'53.60"S	175°19'1.53"W
3	21°4'10.40"S	175°18'17.33"W
4	21°3'6.77"S	175°19'39.91"W
5	21°3'52.77"S	175°20'24.54"W

The areas inside the following straight boundary lines drawn between the Geographical Boundary Points with geographical coordinates outlined in Map 18 of Schedule 1 shall be Fish Habitat Reserves:

Zone	Point	Latitude	Longitude
1	1	21°4'10.59"S	175°19'30.00"W
	2	21°4'22.39"	175°19'6.73"W

	3	21°4'9.18"S	175°19'7.07"W
	4	21°3'59.16"S	175°19'25.73"W
2	5	21°4'9.91"S	175°20'2.85"W
	6	21°3'58.21"S	175°19'53.77"W
	7	21°3'49.05"S	175°20'2.09"W
	8	21°4'1.23"S	175°20'14.49"W

MAP 18: Special Management Area of Ha'atafu



Special Management Area of 'Utulei (Vava'u)

The areas inside the following straight boundary lines drawn between the Geographical Boundary Points with geographical coordinates outlined in Map 19 of Schedule 1 shall be a Special Management Area for the purpose of coastal community management:

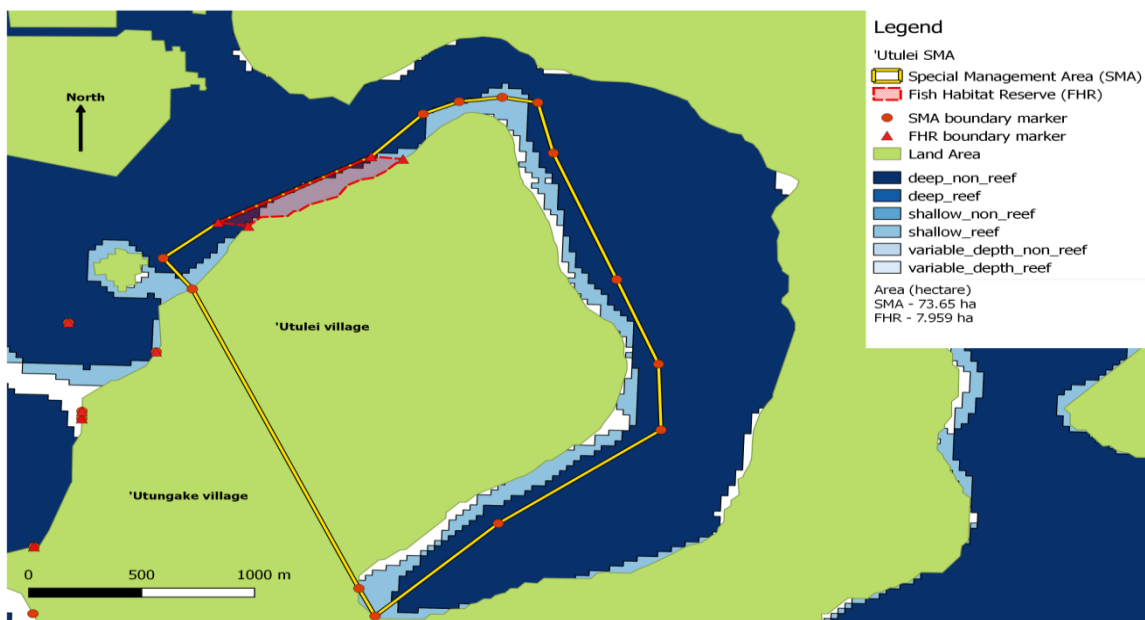
Point	Latitude	Longitude
1	18°40'39.41"S	173°59'58.45"W
2	18°40'46.54"S	173°59'56.17"W
3	18°40'26.90"S	173°59'36.10"W
4	18°40'9.00"S	173°59'11.80"W
5	18°39'56.70"S	173°59'12.40"W
6	18°39'41.00"S	173°59'19.00"W
7	18°39'17.50"S	173°59'29.00"W

8	18°39'8.10"S	173°59'31.50"W
9	18°39'7.20"S	173°59'36.90"W
10	18°39'8.10"S	173°59'43.40"W
11	18°39'10.50"S	173°59'48.80"W
12	18°39'18.60"S	173°59'56.50"W
13	18°39'31.30"S	174° 0'19.40"W
14	18°39'38.10"S	174° 0'27.60"W
15	18°39'44.56"S	174° 0'22.42"W

The areas inside the following straight boundary lines drawn between the Geographical Boundary Points with geographical coordinates outlined in Map 19 of Schedule 1 shall be a Fish Habitat Reserve:

Point	Latitude	Longitude
12	18°39'18.60"S	173°59'56.50"W
13	18°39'31.30"S	174° 0'19.40"W
16	18°39'34.29"S	174° 0'15.96"W
17	18°39'19.56"S	173°59'48.18"W

MAP 19: Special Management Area of 'Utulei



Special Management Area of ‘Utungake (Vava’u)

The areas inside the following straight boundary lines drawn between the Geographical Boundary Points with geographical coordinates outlined in Map 20 of Schedule 1 shall be a Special Management Area for the purpose of coastal community management:

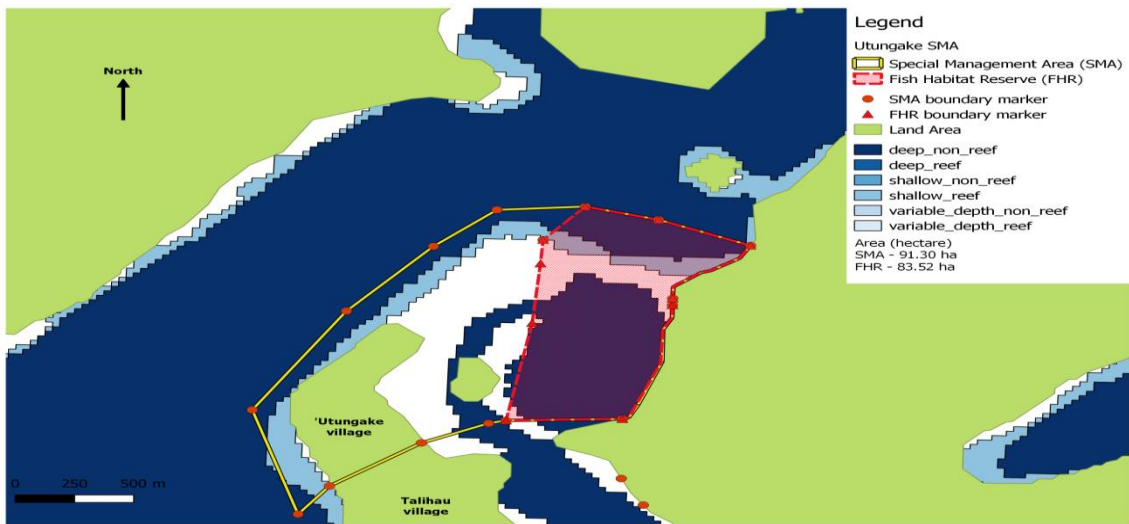
Point	Latitude	Longitude
1	18°39'50.40"S	174° 0'41.70"W
2	18°39'55.74"S	174° 0'26.76"W
3	18°40'6.94"S	174° 0'37.36"W
4	18°39'54.90"S	174° 0'58.24"W
5	18°39'47.80"S	174° 0'52.30"W
6	18°39'48.70"S	174° 1'5.00"W
7	18°39'56.50"S	174° 1'14.00"W
8	18°40'10.30"S	174° 1'26.30"W
9	18°40'31.30"S	174° 1'39.50"W
10	18°40'53.11"S	174° 1'32.52"W
11	18°40'47.12"S	174° 1'28.11"W
12	18°40'37.85"S	174° 1'15.01"W
13	18°40'33.59"S	174° 1'5.42"W
14	18°40'32.93"S	174° 1'2.92"W
18	18°40'34.22"S	174° 0'43.31"W
17	18°40'8.35"S	174° 0'37.30"W

The areas inside the following straight boundary lines drawn between the Geographical Boundary Points with geographical coordinates outlined in Map 20 of Schedule 1 shall be Fish Habitat Reserves:

Zone	Point	Latitude	Longitude
1	14	18°40'32.93"S	174° 1'2.92"W
	15	18°40'12.38"S	174° 0'59.51"W
	16	18°39'59.84"S	174° 0'58.43"W
	17	18°40'8.35"S	174° 0'37.30"W
	18	18°40'34.22"S	174° 0'43.31"W
2	1	18°39'50.40"S	174° 0'41.70"W

2	18°39'55.74"S	174° 0'26.76"W
3	18°40'6.94"S	174° 0'37.36"W
4	18°39'54.90"S	174° 0'58.24"W
5	18°39'47.80"S	174° 0'52.30"W

MAP 20: Special Management Area of ‘Utungake



Special Management Area of Taliuhau (Vava’u)

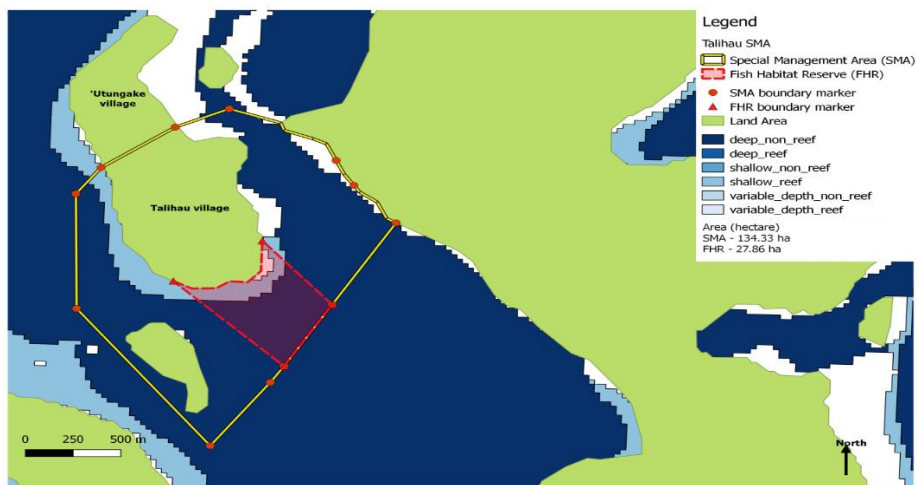
The areas inside the following straight boundary lines drawn between the Geographical Boundary Points with geographical coordinates outlined in Map 21 of Schedule 1 shall be a Special Management Area for the purpose of coastal community management:

Point	Latitude	Longitude
1	18°40'37.85"S	174° 1'15.01"W
2	18°40'33.59"S	174° 1'5.42"W
3	18°40'44.66"S	174° 0'44.64"W
4	18°40'58.66"S	174° 0'35.11"W
11	18°41'17.26"S	174° 0'46.24"W
10	18°41'31.22"S	174° 0'54.62"W
5	18°41'34.90"S	174° 0'57.00"W
6	18°41'49.30"S	174° 1'7.50"W
7	18°41'18.88"S	174° 1'31.94"W
8	18°40'53.11"S	174° 1'32.52"W

The areas inside the following straight boundary lines drawn between the Geographical Boundary Points with geographical coordinates outlined in Map 21 of Schedule 1 shall be a Fish Habitat Reserve:

Point	Latitude	Longitude
9	18°41'12.66"S	174° 1'14.86"W
10	18°41'31.22"S	174° 0'54.62"W
11	18°41'17.26"S	174° 0'46.24"W
12	18°41'3.18"S	174° 1'0.23"W

MAP 21: Special Management Area of Talihau



Special Management Area of Falevai (Vava'u)

The areas inside the following straight boundary lines drawn between the Geographical Boundary Points with geographical coordinates outlined in Map 22 of Schedule 1 shall be a Special Management Area for the purpose of coastal community management:

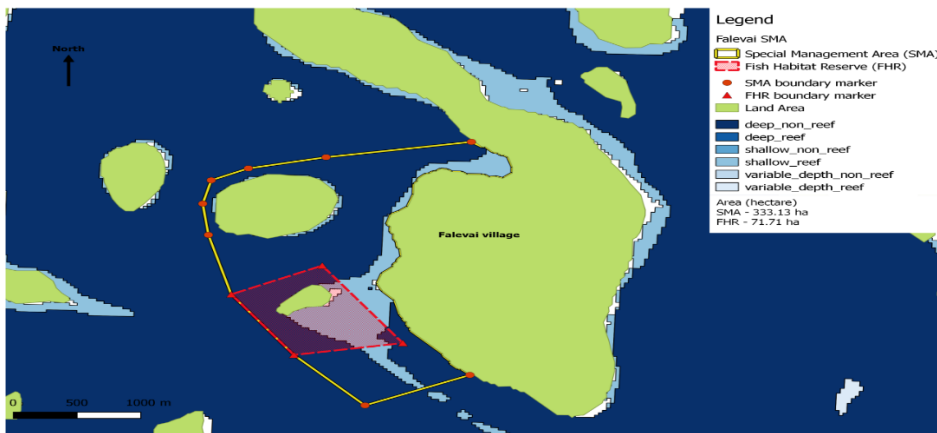
Point	Latitude	Longitude
1	18°41'53.70"S	174° 1'48.50"W
2	18°42'3.70"S	174° 2'44.00"W
3	18°42'7.80"S	174° 2'54.80"W
4	18°42'16.20"S	174° 3'1.30"W
5	18°42'25.50"S	174° 3'0.60"W
6	18°42'57.20"S	174° 2'45.80"W

7	18°43'12.70"S	174° 2'31.00"W
8	18°43'26.30"S	174° 2'13.10"W
9	18°43'16.24"S	174° 1'58.50"W

The areas inside the following straight boundary lines drawn between the Geographical Boundary Points with geographical coordinates outlined in Map 22 of Schedule 1 shall be a Fish Habitat Reserve:

Point	Latitude	Longitude
6	18°42'57.20"S	174° 2'45.80"W
7	18°43'12.70"S	174° 2'31.00"W
10	18°43'6.20"S	174° 2'15.70"W
11	18°42'47.30"S	174° 2'30.60"W

MAP 22: Special Management Area of Falevai (Vava'u)



Special Management Area of Koloa (Vava'u)

The areas inside the following straight boundary lines drawn between the Geographical Boundary Points with geographical coordinates outlined in Map 23 of Schedule 1 shall be a Special Management Area for the purpose of coastal community management:

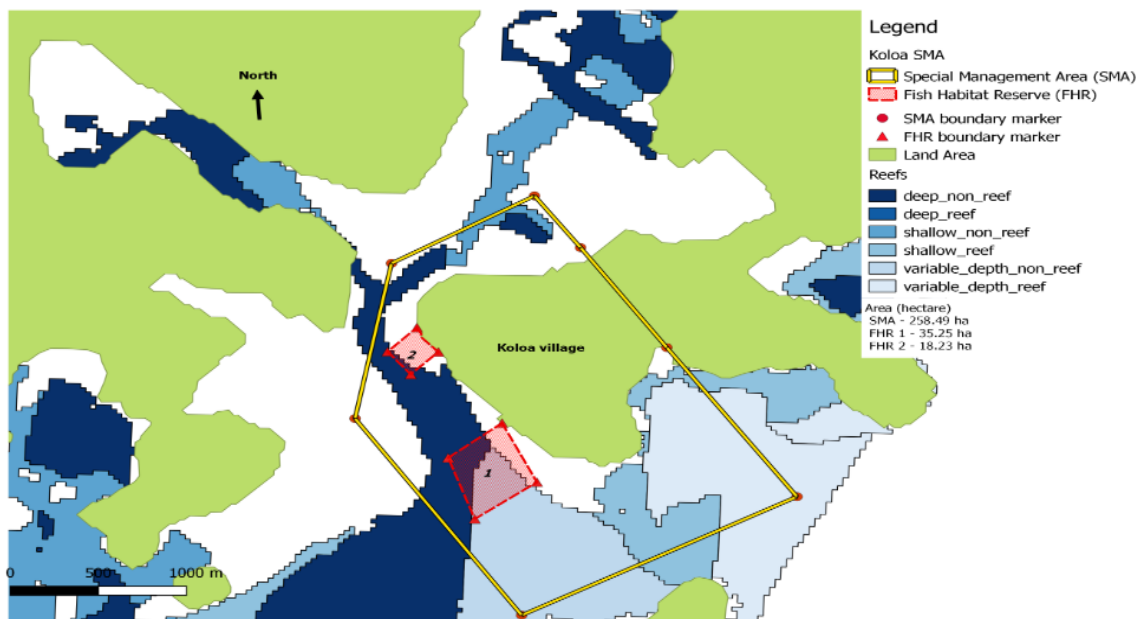
Point	Latitude	Longitude
1	18°38'44.00"S	173°55'25.70"W
2	18°39'20.50"S	173°54'59.60"W

3	18°39'49.40"S	173°55'52.40"W
4	18°39'3.40"S	173°56'25.50"W
5	18°38'26.60"S	173°56'19.10"W
6	18°38'10.20"S	173°55'51.70"W
7	18°38'22.28"S	173°55'42.56"W

The areas inside the following straight boundary lines drawn between the Geographical Boundary Points with geographical coordinates outlined in Map 23 of Schedule 1 shall be Fish Habitat Reserves:

Zone	Point	Latitude	Longitude
1	8	18°38'41.70"S	173°56'13.80"W
	9	18°38'47.50"S	173°56'19.50"W
	10	18°38'52.80"S	173°56'14.90"W
	11	18°38'46.70"S	173°56'8.50"W
2	12	18°39'3.30"S	173°55'56.00"W
	13	18°39'12.40"S	173°56'7.30"W
	14	18°39'26.80"S	173°56'1.90"W
	15	18°39'17.90"S	173°55'50.00"W

MAP 23: Special Management Area of Koloa (Vava’u)

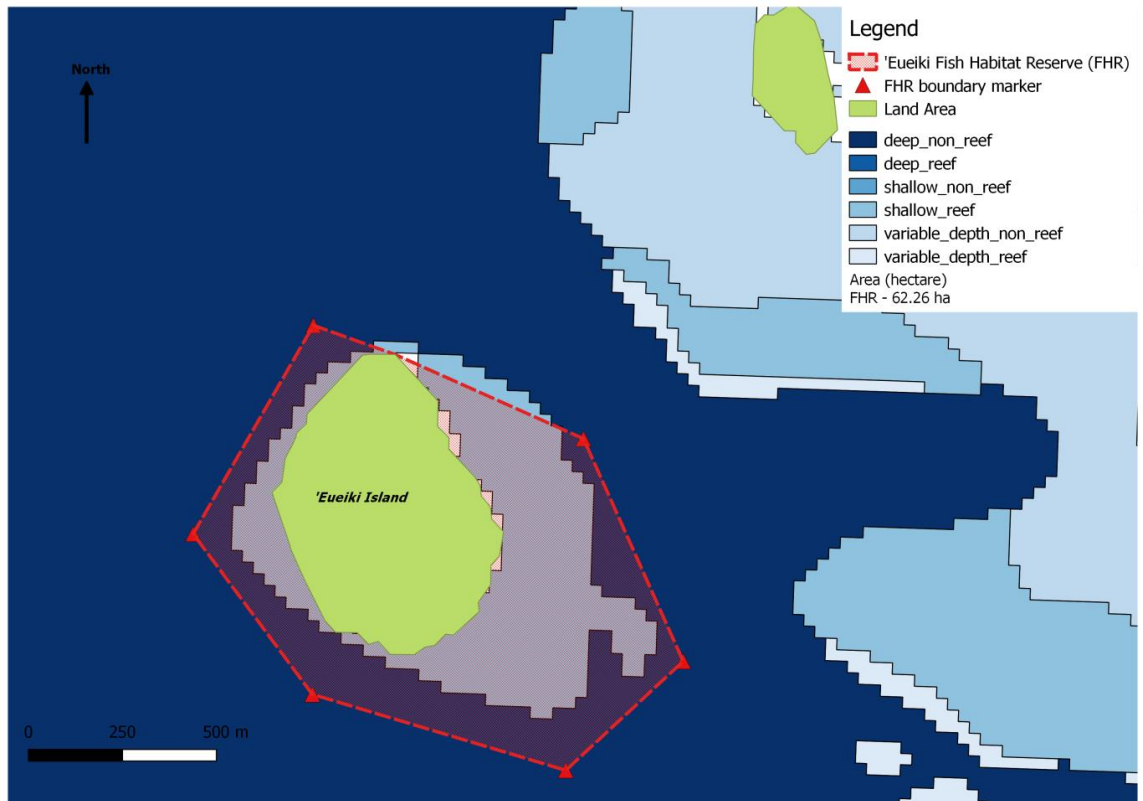


Special Management Area of ‘Eueiki Island (Vava’u)

The areas inside the following straight boundary lines drawn between the Geographical Boundary Points with geographical coordinates outlined in Map 24 of Schedule 1 shall be a Special Management Area and a Fish Habitat Reserve:

Point	Latitude	Longitude
1	18°46'3.70"S	174° 1'25.10"W
2	18°46'17.46"S	174° 1'14.03"W
3	18°46'23.60"S	174° 0'50.90"W
4	18°46'14.00"S	174° 0'40.40"W
5	18°45'54.90"S	174° 0'49.80"W
6	18°45'45.50"S	174° 1'14.50"W

MAP 24: Special Management Area of 'Eueiki Island (Vava'u)



Special Management Area of Lape (Vava'u)

The areas inside the following straight boundary lines drawn between the Geographical Boundary Points with geographical coordinates outlined in Map 25 of Schedule 1 shall be a Special Management Area for the purpose of coastal community management:

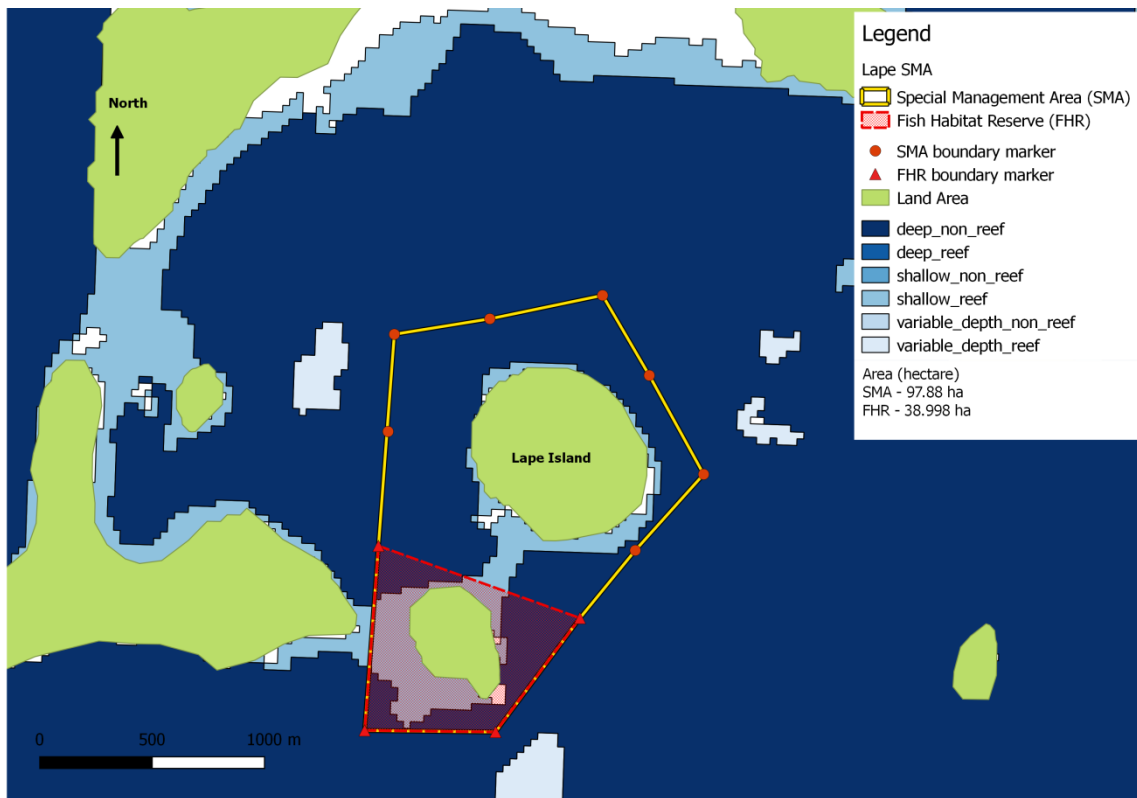
Name	Latitude	Longitude
1	18°42'46.30"S	174° 4'51.50"W
2	18°42'57.80"S	174° 4'44.20"W
3	18°43'12.00"S	174° 4'35.70"W
4	18°43'23.20"S	174° 4'45.90"W
5	18°43'33.14"S	174° 4'54.14"W
6	18°43'49.86"S	174° 5'6.68"W
7	18°43'49.95"S	174° 5'26.57"W

8	18°43'23.15"S	174° 5'24.93"W
9	18°43'6.55"S	174° 5'23.75"W
10	18°42'52.43"S	174° 5'23.04"W
11	18°42'49.97"S	174° 5'8.57"W

The areas inside the following straight boundary lines drawn between the Geographical Boundary Points with geographical coordinates outlined in Map 25 of Schedule 1 shall be a Fish Habitat Reserve:

Point	Latitude	Longitude
Lape 5	18°43'33.14"S	174° 4'54.14"W
Lape 6	18°43'49.86"S	174° 5'6.68"W
Lape 7	18°43'49.95"S	174° 5'26.57"W
Lape 8	18°43'23.15"S	174° 5'24.93"W

MAP 25: Special Management Area of Lape



Special Management Area of Hunga (Vava'u)

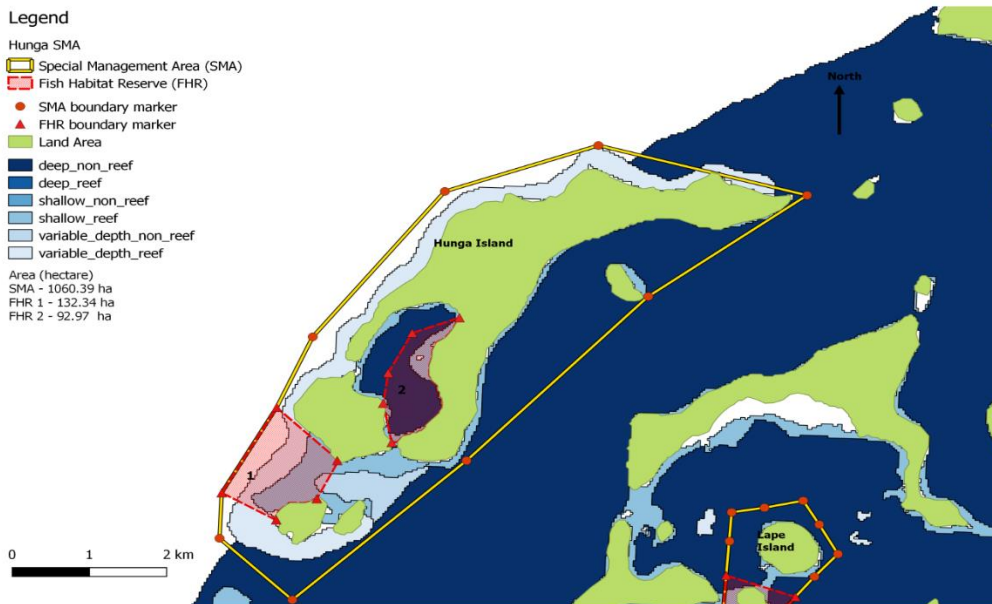
The areas inside the following straight boundary lines drawn between the Geographical Boundary Points with geographical coordinates outlined in Map 26 of Schedule 1 shall be a Special Management Area for the purpose of coastal community management:

Point	Latitude	Longitude
1	18°43'38.00"S	174° 8'36.60"W
2	18°42'29.10"S	174° 7'20.70"W
3	18°41'8.00"S	174° 6'1.70"W
4	18°40'17.70"S	174° 4'52.30"W
5	18°39'54.90"S	174° 6'25.00"W
6	18°40'18.30"S	174° 7'32.50"W
7	18°41'29.90"S	174° 8'29.70"W
8	18°42'4.50"S	174° 8'45.10"W
9	18°42'46.40"S	174° 9'8.70"W
10	18°43'8.60"S	174° 9'9.30"W

The areas inside the following straight boundary lines drawn between the Geographical Boundary Points with geographical coordinates outlined in Map 26 of Schedule 1 shall be Fish Habitat Reserves:

Zone	Point	Latitude	Longitude
1	8	18°42'4.50"S	174° 8'45.10"W
	9	18°42'46.40"S	174° 9'8.70"W
	11	18°42'59.10"S	174° 8'45.50"W
	12	18°42'48.90"S	174° 8'26.20"W
	13	18°42'30.20"S	174° 8'17.90"W
2	14	18°42'20.80"S	174° 7'54.60"W
	15	18°42'2.20"S	174° 8'1.20"W
	16	18°41'47.00"S	174° 7'56.10"W
	17	18°41'27.40"S	174° 7'45.80"W
	18	18°41'19.80"S	174° 7'22.90"W

MAP 26: Special Management Area of Hunga (Vava'u)



Special Management Area of Ofu (Vava'u)

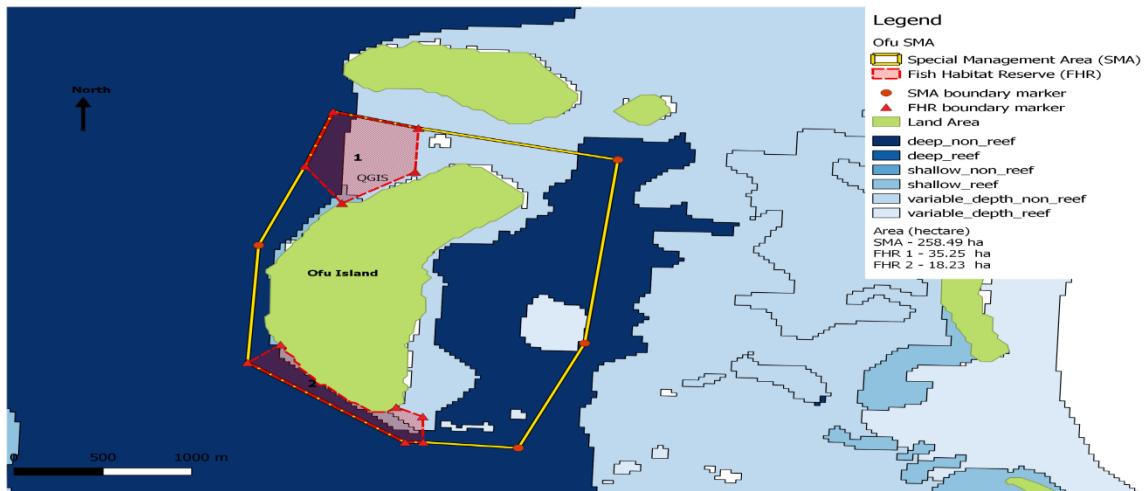
The areas inside the following straight boundary lines drawn between the Geographical Boundary Points with geographical coordinates outlined in Map 27 of Schedule 1 shall be a Special Management Area for the purpose of coastal community management:

Point	Latitude	Longitude
1	18°41'13.00"S	173°57'37.88"W
2	18°41'29.22"S	173°57'43.01"W
3	18°41'52.80"S	173°57'51.50"W
4	18°42'27.60"S	173°57'53.00"W
5	18°42'50.70"S	173°57'22.30"W
6	18°42'50.60"S	173°57'18.80"W
7	18°42'52.00"S	173°57'0.50"W
8	18°42'20.80"S	173°56'48.30"W
9	18°41'26.36"S	173°56'42.90"W
10	18°41'17.60"S	173°57'21.40"W

The areas inside the following straight boundary lines drawn between the Geographical Boundary Points with geographical coordinates outlined in Map 27 of Schedule 1 shall be Fish Habitat Reserves:

Zone	Point	Latitude	Longitude
1	1	18°41'13.00"S	173°57'37.88"W
	2	18°41'29.22"S	173°57'43.01"W
	10	18°41'17.60"S	173°57'21.40"W
	11	18°41'30.60"S	173°57'21.80"W
	12	18°41'40.10"S	173°57'35.70"W
2	4	18°42'27.60"S	173°57'53.00"W
	5	18°42'50.70"S	173°57'22.30"W
	6	18°42'50.60"S	173°57'18.80"W
	13	18°42'21.50"S	173°57'46.10"W
	14	18°42'39.95"S	173°57'24.64"W
	15	18°42'43.04"S	173°57'19.05"W

MAP 27: Special Management Area of Ofu (Vava'u)



Special Management Area of Mango (Ha'apai)

The areas inside the following straight boundary lines drawn between the Geographical Boundary Points with geographical coordinates outlined in Map 28 of Schedule 1 shall be a Special Management Area for the purpose of coastal community management:

Point	Latitude	Longitude
1	20°20'58.10"S	174°41'33.00"W
2	20°19'17.55"S	174°40'48.11"W
3	20°17'48.79"S	174°45'5.15"W
4	20°19'40.94"S	174°46'21.26"W

The areas inside the following straight boundary lines drawn between the Geographical Boundary Points with geographical coordinates outlined in Map 28 of Schedule 1 shall be a Fish Habitat Reserve:

Point	Latitude	Longitude
5	20°19'48.20"S	174°42'27.46"W
6	20°19'29.33"S	174°42'0.80"W
7	20°18'49.51"S	174°42'20.24"W
8	20°18'50.97"S	174°43'25.10"W
9	20°19'33.98"S	174°43'32.21"W
10	20°19'34.05"S	174°43'2.93"W

MAP 28: Special Management Area of Mango (Ha'apai)



Special Management Area of Fonoifua (Ha'apai)

The areas inside the following straight boundary lines drawn between the Geographical Boundary Points with geographical coordinates outlined in Map 29 of Schedule 1 shall be a Special Management Area for the purpose of coastal community management:

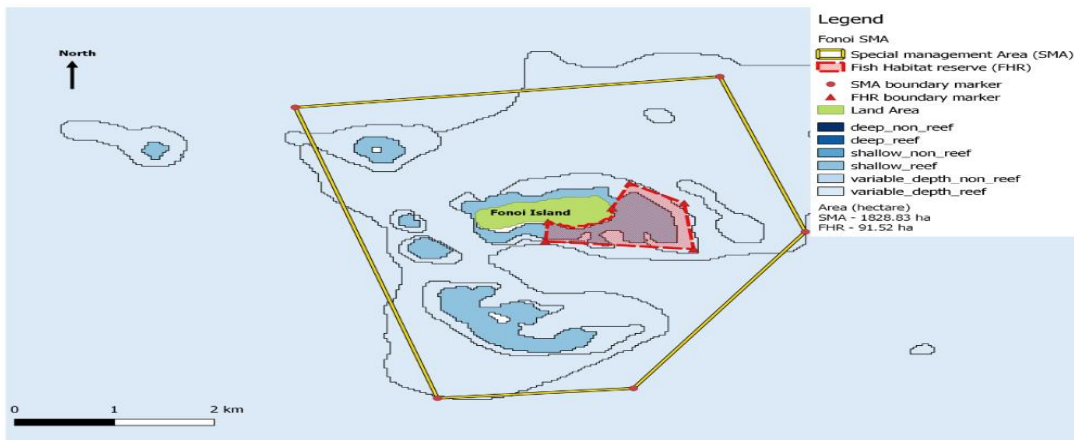
Point	Latitude	Longitude
1	20°18'28.29"S	174°38'21.63"W
2	20°18'21.83"S	174°37'13.98"W
3	20°16'53.25"S	174°36'15.92"W
4	20°15'26.65"S	174°36'46.79"W
5	20°15'45.88"S	174°39'13.28"W

The areas inside the following straight boundary lines drawn between the Geographical Boundary Points with geographical coordinates outlined in Map 29 of Schedule 1 shall be a Fish Habitat Reserve:

Point	Latitude	Longitude
6	20°16'40.88"S	174°37'24.57"W
7	20°16'26.88"S	174°37'17.13"W

8	20°16'38.78"S	174°36'58.04"W
9	20°17'3.50"S	174°36'54.37"W
10	20°16'59.79"S	174°37'45.70"W
11	20°16'47.66"S	174°37'45.04"W

MAP 29: Special Management Area of Fonoifua (Ha’apai)



Special Management Area of Matuku (Ha’apai)

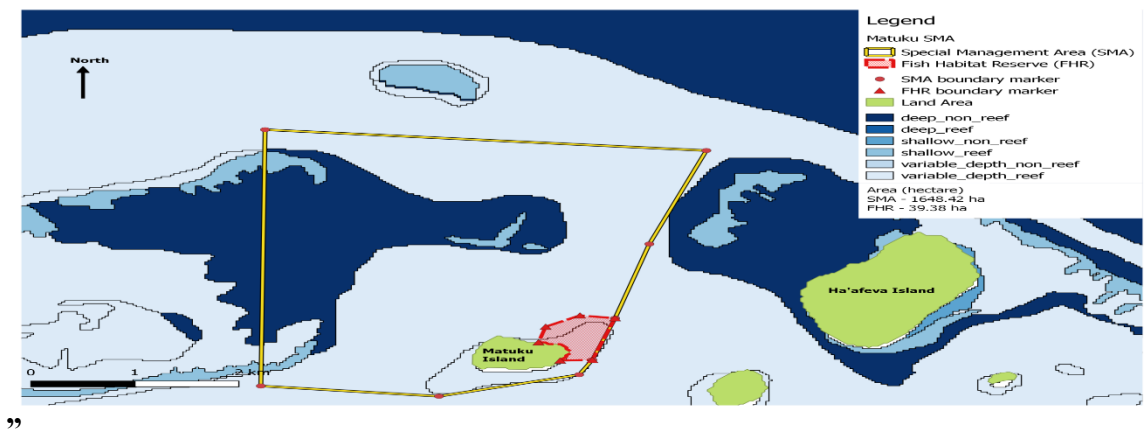
The areas inside the following straight boundary lines drawn between the Geographical Boundary Points with geographical coordinates outlined in Map 30 of Schedule 1 shall be a Special Management Area for the purpose of coastal community management:

Point	Latitude	Longitude
1	19°57'54.75"S	174°46'12.96"W
2	19°55'16.07"S	174°46'9.87"W
3	19°55'24.49"S	174°43'44.50"W
4	19°56'23.55"S	174°44'2.52"W
5	19°57'46.11"S	174°44'24.59"W
6	19°58'0.26"S	174°45'10.77"W
11	19°57'10.42"S	174°44'13.20"W
12	19°57'36.75"S	174°44'20.34"W

The areas inside the following straight boundary lines drawn between the Geographical Boundary Points with geographical coordinates outlined in Map 30 of Schedule 1 shall be a Fish Habitat Reserve:

Point	Latitude	Longitude
7	19°57'37.31"S	174°44'30.87"W
8	19°57'27.90"S	174°44'38.56"W
9	19°57'16.06"S	174°44'36.09"W
10	19°57'8.81"S	174°44'24.84"W
11	19°57'10.42"S	174°44'13.20"W
12	19°57'36.75"S	174°44'20.34"W

MAP 30: Special Management Area of Matuku (Ha'apai)



Made at Nuku'alofa this 29th day of June 2017.

Hon. Semisi Fakahau

Minister for Agriculture, Food, Forests and Fisheries