



**REPUBLIC OF NAURU
GOVERNMENT GAZETTE
PUBLISHED BY AUTHORITY**

No. 181

4th October 2016

Nauru

G.N. No.779 / 2016

PUBLIC NOTICE

The Nauru Lands Committee will be determining Personalty & Realty Estate of the following:

1. Deresa Teerua
2. Rykers Solomon
3. Margaret Lucia Hiram
4. James Japhet Dediya

This is a notification is for interested parties having claims against the above estates may seek at the Nauru Lands Committee office which date for estates will be processed within 14 days of gazettal.

**TYRAN CAPELLE
CHAIRPERSON - NAURU LANDS COMMITTEE**

G.N. No. 780 / 2016

PUBLIC NOTICE

The Nauru Lands Committee will be determining Personalty & Realty estate of the following:

1. Virgita Roland
2. Regina Akibwib
3. Mike Redfern
4. Bernadette Tulafono
5. Devenish Deireragea

This is a notification is for interested parties having claims against the above estates may seek at the Nauru Lands Committee office which date for estates will be processed within 14 days of gazettal.

**TYRAN CAPELLE
CHAIRPERSON - NAURU LANDS COMMITTEE**

G.N. No.781 / 2016

PUBLIC NOTICE

The Nauru Lands Committee will be determining Personalty & Realty estate of the following:

1. Roderick Kaierua

This is a notification is for interested parties having claims against the above estate may seek at the Nauru Lands Committee office which date for estates will be processed within 14 days of gazettal.

TYRAN CAPELLE
CHAIRPERSON - NAURU LANDS COMMITTEE

G.N. No.782 / 2016

PUBLIC NOTICE

The Nauru Lands Committee will be determining Personalty & Realty estate of the following:

1. Adonis Gioura
2. Lorna Kaurai
3. Tekautu Deiranauw

This is a notification is for interested parties having claims against the above estates may seek at the Nauru Lands Committee office which date for estates will be processed within 14 days of gazettal.

TYRAN CAPELLE
CHAIRPERSON - NAURU LANDS COMMITTEE

G.N. No. 783 /2016

Determination of the Beneficiaries of the Estate of the late **DERESA TEERUA** of Uaboe District.

ESTATE

1. The Nauru Lands Committee had ascertained that the late **DERESA TEERUA** had been determined by the decisions of the Nauru Lands Committee (or its predecessor the Lands Committee) to be the owner of the following lands: -

DISTRICT	PORTION NO.	NAME OF LAND	TYPE OF LAND	GAZETTE NOTICE OF OWNERSHIP	SHARE
Nibok	225	Edet	c.l	69/2011	7/90
Uaboe	52	Ubaneb	p.l	69/2011	7/90
Uaboe	72	Mueoen	c.l	52/1984	7/90
Anibare	151	Urokeiya	p.l	69/2011	1/18
Anetan	50	Eberin	c.l	69/2011	1/20
Anetan	56	Aruwangada	c.l	69/2011	1/20
Buada	168	Adetororo	p.l	69/2011	1/20
Denigomodu	11	Areyeyen	c.l	69/2011	1/20
Denigomodu	12		c.l	69/2011	1/20
Denigomodu	36		p.l	69/2011	1/20

G.N. No.783 / 2016 (cont'd)

Denigomodu	65	Anore	p.l	69/2011	1/20
Denigomodu	105		c.l	69/2011	1/20
Denigomodu	108	Eateiyabong	c.l	69/2011	1/20
Denigomodu	245	Eatebarangae	p.l	69/2011	1/20
Denigomodu	248	Anat	p.l	69/2011	1/20
Denigomodu	258	Ijongidero	p.l	69/2011	1/20
Denigomodu	283	Eatedogouw	p.l	69/2011	1/20
Nibok	4	Eatebar	p.l	69/2011	1/20
Nibok	8	Atung	p.l	69/2011	1/20
Nibok	14	Aramanbawo	p.l	69/2011	1/20
Nibok	15		p.l	69/2011	1/20
Nibok	20	Enuquabab	p.l	69/2011	1/20
Nibok	91	Anemenoak	p.l	69/2011	1/20
Nibok	104	Oininibok	p.l	69/2011	1/20
Nibok	133	Yapuib	c.l	69/2011	1/20
Nibok	137	Anbobwiya	c.l	69/2011	1/20
Nibok	156	Dawai Atebwae	c.l	69/2011	1/20
Nibok	164	Ijeduen	c.l	69/2011	1/20
Nibok	198	Yapiyuw	c.l	69/2011	1/20
Nibok	204	Yakarikik	c.l	69/2011	1/20
Nibok	228	Edet	c.l	69/2011	1/20
Uaboe	106	Mueoen	c.l	69/2011	1/20
Nibok	101	Marawa	p.l	52/1984	7/180
Nibok	161	Ganaquo	c.l	69/2011	3/80
Nibok	163	Ijeduen	c.l	69/2011	3/80
Uaboe	1		p.l	69/2011	1/30
Nibok	134	Anakawiduwā	c.l	69/2011	7/240
Buada	142	Atebobō	p.l	69/2011	1/40
Denigomodu	146	Anpudu	c.l	69/2011	1/40
Denigomodu	243	Iderige	P	69/2011	1/40
Denigomodu	266	Atebwae	c.l	69/2011	1/40
Denigomodu	286	Eateijabong	c.l	69/2011	1/40
Nibok	35	Barabaran	p.l	69/2011	1/40
Nibok	40		p.l	69/2011	1/40
Nibok	50		p.l	69/2011	1/40
Nibok	54	Babwan	p.l	69/2011	1/40
Nibok	138	Eatederagabu	c.l	69/2011	1/40
Anibare	230	Ijuwokoe	p.l	69/2011	7/360
Baiti	179	Anoe	p.l	69/2011	7/360
Baiti	192	Anoe	p.l	69/2011	7/360
Uaboe	6	Kurin	p.l	69/2011	7/360
Uaboe	14	Kurin	p.l	69/2011	7/360

G.N. No. 783 / 2016 (cont'd)

Uaboe	115	Mueon	c.l	69/2011	7/360
Uaboe	137	Mapweo	p.l	69/2011	7/360
Anabar	16	Boroboron	c.l	69/2011	1/60
Anabar	32	Atenimen	p.l	69/2011	1/60
Anabar	109	Boroboren	c.l	69/2011	1/60
Anabar	113	Boroboren	c.l	69/2011	1/60
Anabar	122	Boroboren	c.l	69/2011	1/60
Anibare	248	Atueo	p.l	69/2011	1/60
Anibare	297	Bweranibok	c.l	69/2011	1/60
Ewa	40	Anibe	p.l	69/2011	1/60
Anabar	44	Eatiti	p.l	69/2011	1/72
Anabar	20	Atetirir	p.l	69/2011	1/120
Anetan	131	Ubwidina	p.l	69/2011	1/120
Buada	229	Adungidunger	c.l	69/2011	1/160
Yaren	348	Umwawawa	p.l	69/2011	1/160
Ewa	204	Boroboron	c.l	69/2011	1/168
Ijuw	31	Ganakoro	c.l	69/2011	1/168
Ijuw	125	Anengin	p.l	69/2011	1/168
Nibok	74	Oininibok	p.l	52/1984	1/180
Buada	33	Ijati	p.l	69/2011	1/200
Buada	39	Idageang	p.l	69/2011	1/200
Buada	215	Anoreo	c.l	69/2011	1/200
Anibare	336	Ijuwokoe	p.l	69/2011	1/240
Uaboe	12	Kurin	p.l	69/2011	1/240
Baiti	87	Ateta	p.l	69/2011	1/280
Nibok	227	Eatdabudae	c.l	69/2011	1/280
Aiwo	312	Idunea	p.l	69/2011	1/320
Anibare	324	Ate	c.l	69/2011	1/336
Ijuw	77	Ijibab	p.l	69/2011	1/336
Aiwo	226	Yangor	c.l	69/2011	1/400
Nibok	74	Oininibok	p.l	69/2011	1/450
Anibare	100	Aribaeong	c.l	69/2011	1/504
Anibare	217	Atekapara	p.l	69/2011	1/504
Baiti	82	Ugino	p.l	69/2011	1/672
Ewa	7	Arubo	c.l	69/2011	1/672
Ewa	26	Arida	p.l	69/2011	1/672
Ewa	144	Anuer	c.l	69/2011	1/672
Ewa	153	Mamweiya	c.l	69/2011	1/672
Ewa	186	Boroboron	c.l	69/2011	1/672
Ijuw	7	Ebara	p.l	69/2011	1/672
Ijuw	34	Ganokoro	c.l	69/2011	1/672
Ijuw	35	Eatdabuarik	c.l	69/2011	1/672

G.N. No. 783 / 2016 (cont'd)

Ijuw	53	Ganokoro	c.l	69/2011	1/672
Ijuw	100	Iako	p.l	69/2011	1/672
Ijuw	115	Aeiw	p.l	69/2011	1/672
Ijuw	120	Atajong	p.l	69/2011	1/672
Ijuw	126	Iatoborobor	c.l	69/2011	1/672
Anibare	121	Anuquoge	c.l	69/2011	1/840
Anibare	188	Atoredeto	p.l	69/2011	1/1008

DETERMINATION OF BENEFICIARIES

2. The Nauru Lands Committee has determined that the Beneficiary to the estate of the
(a) in respect of the land shown in paragraph 1 above.

DISTRICT	PORTION NO.	NAME OF LAND	BENEFICIARIES	SHARE
Nibok	225	Edet	Tavinga Teerua (LTO)	7/360
			Raymond Teerua	7/360
			Melba Teerua	7/360
			Taroro Teerua	7/360
Uaboe	52	Ubaneb	As for Portion no.225, c.l	Nibok
Uaboe	72	Mueoen	- do -	
Anibare	151	Urokeiya	Tavinga Teerua (LTO)	1/72
			Raymond Teerua	1/72
			Melba Teerua	1/72
			Taroro Teerua	1/72
Anetan	50	Eberin	Tavinga Teerua (LTO)	1/80
			Raymond Teerua	1/80
			Melba Teerua	1/80
			Taroro Teerua	1/80
Anetan	56	Aruwangada	As for Portion no.50, c.l	Anetan
Buada	168	Adetororo	- do -	
Denigomodu	11	Areyeyen	- do -	
Denigomodu	12		- do -	
Denigomodu	36		- do -	
Denigomodu	65	Anore	- do -	
Denigomodu	105		- do -	
Denigomodu	108	Eateiyabong	- do -	
Denigomodu	245	Eatebarangae	- do -	
Denigomodu	248	Anat	- do -	
Denigomodu	258	Ijongidero	- do -	
Denigomodu	283	Eatedogouw	- do -	
Nibok	4	Eatebar	- do -	
Nibok	8	Atung	- do -	

G.N. No. 783 / 2016 (cont'd)

Nibok	14	Aramanbawo	- do -	
Nibok	15		- do -	
Nibok	20	Enuquabab	- do -	
Nibok	91	Anemenoak	- do -	
Nibok	104	Oininibok	- do -	
Nibok	133	Yapuib	- do -	
Nibok	137	Anbobwiya	- do -	
Nibok	156	Dawai Atebwae	- do -	
Nibok	164	Ijeduen	- do -	
Nibok	198	Yapiyuw	- do -	
Nibok	204	Yakaridik	- do -	
Nibok	228	Edet	- do -	
Uaboe	106	Mueoen	- do -	
Nibok	101	Marawa	Tavinga Teerua (LTO)	7/720
			Raymond Teerua	7/720
			Melba Teerua	7/720
			Taroro Teerua	7/720
Nibok	161	Ganaquo	Tavinga Teerua (LTO)	3/320
			Raymond Teerua	3/320
			Melba Teerua	3/320
			Taroro Teerua	3/320
Nibok	163	Ijeduen	As for Portion no.161, c.1	Nibok
Uaboe	1		Tavinga Teerua (LTO)	1/120
			Raymond Teerua	1/120
			Melba Teerua	1/120
			Taroro Teerua	1/120
Nibok	134	Anakawiduwa	Tavinga Teerua (LTO)	7/960
			Raymond Teerua	7/960
			Melba Teerua	7/960
			Taroro Teerua	7/960
Buada	142	Atebobo	Tavinga Teerua (LTO)	1/160
			Raymond Teerua	1/160
			Melba Teerua	1/160
			Taroro Teerua	1/160
Denigomodu	146	Anpudu	As for Portion no.142, p.1	Buada
Denigomodu	243	Iderige	- do -	
Denigomodu	266	Atebwae	- do -	
Denigomodu	286	Eateijabong	- do -	
Nibok	35	Barabaran	- do -	
Nibok	40		- do -	
Nibok	50		- do -	
Nibok	54	Babwan	- do -	

G.N. No. 783 / 2016 (cont'd)

Nibok	138	Eatederagabu	- do -	
Anibare	230	Ijuwokoe	Tavinga Teerua (LTO)	7/1440
			Raymond Teerua	7/1440
			Melba Teerua	7/1440
			Taroro Teerua	7/1440
Baiti	179	Anoe	As for Portion no.230, p.1	Anibare
Baiti	192	Anoe	- do -	
Uaboe	6	Kurin	- do -	
Uaboe	14	Kurin	- do -	
Uaboe	115	Mueon	- do -	
Uaboe	137	Mapweo	- do -	
Anabar	16	Boroboron	Tavinga Teerua (LTO)	1/240
			Raymond Teerua	1/240
			Melba Teerua	1/240
			Taroro Teerua	1/240
Anabar	32	Atenimen	As for Portion no.16, c.1	Anabar
Anabar	109	Boroboren	- do -	
Anabar	113	Boroboren	- do -	
Anabar	122	Boroboren	- do -	
Anibare	248	Atueo	- do -	
Anibare	297	Bweranibok	- do -	
Ewa	40	Anibe	- do -	
Anabar	44	Eatiti	Tavinga Teerua (LTO)	1/288
			Raymond Teerua	1/288
			Melba Teerua	1/288
			Taroro Teerua	1/288
Anabar	20	Atetirir	Tavinga Teerua (LTO)	1/480
			Raymond Teerua	1/480
			Melba Teerua	1/480
			Taroro Teerua	1/480
Anetan	131	Ubwidina	As for Portion no.20, p.1	Anabar
Buada	229	Adungidunger	Tavinga Teerua (LTO)	1/640
			Raymond Teerua	1/640
			Melba Teerua	1/640
			Taroro Teerua	1/640
Yaren	348	Umwanawa	As for Portion no.229, c.1	Buada
Ewa	204	Boroboron	Tavinga Teerua (LTO)	1/672
			Raymond Teerua	1/672
			Melba Teerua	1/672
			Taroro Teerua	1/672
Ijuw	31	Ganakoro	As for Portion no.204, c.1	Ewa
Ijuw	125	Anengin	- do -	

G.N. No.783 / 2016 (cont'd)

Nibok	74	Oininibok	Tavinga Teerua (LTO)	1/720
			Raymond Teerua	1/720
			Melba Teerua	1/720
			Taroro Teerua	1/720
Buada	33	Ijati	Tavinga Teerua (LTO)	1/800
			Raymond Teerua	1/800
			Melba Teerua	1/800
			Taroro Teerua	1/800
Buada	39	Idageang	As for Portion no.33, p.1	Buada
Buada	215	Anoreo	- do -	
Anibare	336	Ijuwokoe	Tavinga Teerua (LTO)	1/960
			Raymond Teerua	1/960
			Melba Teerua	1/960
			Taroro Teerua	1/960
Uaboe	12	Kurin	As for Portion no.336, p.1	Anibare
Baiti	87	Ateta	Tavinga Teerua (LTO)	1/1120
			Raymond Teerua	1/1120
			Melba Teerua	1/1120
			Taroro Teerua	1/1120
Nibok	227	Eatdabudae	As for Portion no.87, p.1	Baiti
Aiwo	312	Idunea	Tavinga Teerua (LTO)	1/1280
			Raymond Teerua	1/1280
			Melba Teerua	1/1280
			Taroro Teerua	1/1280
Anibare	324	Ate	Tavinga Teerua (LTO)	1/1344
			Raymond Teerua	1/1344
			Melba Teerua	1/1344
			Taroro Teerua	1/1344
Ijuw	77	Ijibab	As for Portion no.324, c.1	Anibare
Aiwo	226	Yangor	Tavinga Teerua (LTO)	1/1600
			Raymond Teerua	1/1600
			Melba Teerua	1/1600
			Taroro Teerua	1/1600
Nibok	74	Oininibok	Tavinga Teerua (LTO)	1/1800
			Raymond Teerua	1/1800
			Melba Teerua	1/1800
			Taroro Teerua	1/1800
Anibare	100	Aribaeong	Tavinga Teerua (LTO)	1/2016
			Raymond Teerua	1/2016
			Melba Teerua	1/2016
			Taroro Teerua	1/2016
Anibare	217	Atekapara	As for Portion no.100, c.1	Anibare

Baiti	82	Ugino	Tavinga Teerua (LTO)	1/2688
			Raymond Teerua	1/2688
			Melba Teerua	1/2688
			Taroro Teerua	1/2688
Ewa	7	Arubo	As for Portion no.82, p.1	Baiti
Ewa	26	Arida	- do -	
Ewa	144	Anuer	- do -	
Ewa	153	Mamweiya	- do -	
Ewa	186	Boroboron	- do -	
Ijuw	7	Ebara	- do -	
Ijuw	34	Ganokoro	- do -	
Ijuw	35	Eatdabuarik	- do -	
Ijuw	53	Ganokoro	- do -	
Ijuw	100	Iako	- do -	
Ijuw	115	Aeiw	- do -	
Ijuw	120	Atajong	- do -	
Ijuw	126	Iatoborobor	- do -	
Anibare	121	Anuquoge	Tavinga Teerua (LTO)	1/3360
			Raymond Teerua	1/3360
			Melba Teerua	1/3360
			Taroro Teerua	1/3360
Anibare	188	Atoredeto	Tavinga Teerua (LTO)	1/4032
			Raymond Teerua	1/4032
			Melba Teerua	1/4032
			Taroro Teerua	1/4032

Note 1: Those who disagree with the above determination may appeal to the Supreme Court Registry within 21 days of the publication of this Government Gazette.

Note 2: Taroro Teerua trustee by his eldest brother Raymond Teerua till he reaches 8 years.

TYRAN CAPELLE
CHAIRPERSON-NAURU LANDS COMMITTEE

G.N. No.784 / 2016

Determination of the Beneficiaries of the Estate of the late **RYKERS SOLOMON** of Meneng District.**ESTATE**

1. The Nauru Lands Committee ascertained that the estate of the Late **RYKERS SOLOMON** had been determined by the decisions of the Nauru Lands Committee (or its predecessor the Lands Committee) to be the owner of the following lands:

DISTRICT	PORTION NO.	TYPE OF LAND	NAME OF LAND	GAZETTE NOTICE OF OWNERSHIP	SHARE
Anibare	43	c.l	Anera	114/2009	1/8
Meneng	133	c.l	Eatobobwe	114/2009	1/14
Meneng	137	c.l	Ibwe	114/2009	1/14
Meneng	140	c.l	Ibwe	114/2009	1/14
Anibare	50	c.l	Agabwe	114/2009	1/24
Anibare	51	c.l	Agabwe	114/2009	1/24
Anibare	70	c.l	Adetobage	114/2009	1/24
Anibare	185	p.l	Idobua	114/2009	1/24
Buada	12	p.l	Atuowinumor	114/2009	1/24
Buada	15	p.l	Atero	114/2009	1/24
Buada	45	p.l	Iyatsi	114/2009	1/24
Buada	53	p.l	Ijati	114/2009	1/24
Buada	65	p.l	Idutubwije	114/2009	1/24
Buada	97	p.l	Dobuadedar	114/2009	1/24
Buada	271	c.l	Oebuebin	114/2009	1/24
Buada	395	c.l	Animaeor	114/2009	1/24
Meneng	381	p.l	Anor	114/2009	1/24
Meneng	403	c.l	Anor	114/2009	1/24
Yaren	336	p.l	Atubwinumor	114/2009	1/24
Yaren	337	p.l	Atubwinumor	114/2009	1/24
Yaren	350	p.l	Atero	114/2009	1/24
Meneng	416	p.l	Ijonora	114/2009	1/48
Meneng	445	p.l	Tararo	114/2009	1/48
Anibare	193	p.l	Atekapara	140/2016	1/80
Meneng	48	p.l	Ueo	140/2016	1/96
Meneng	51	c.l	Awidainging	140/2016	1/96
Meneng	165	c.l	Ataro	140/2016	5/1152
Meneng	166	c.l	Ataro	140/2016	5/1152
Meneng	167	c.l	Ataro	140/2016	5/1152
Meneng	168	c.l	Ataro	140/2016	5/1152
Meneng	169	c.l	Ataro	140/2016	5/1152
Meneng	180	c.l	Anaoe	140/2016	5/1152
Meneng	181	c.l	Anaoe	140/2016	5/1152

G.N. No.784 / 2016 (cont'd)

Meneng	324	p.l	Eateigogoa	140/2016	1/240
Meneng	399	p.l	Idogobuamwi	140/2016	1/240
Meneng	424	p.l	Anaquen	140/2016	1/300
Meneng	435	p.l	Karawinuroro	140/2016	1/300
Denigomodu	88	p.l	Uroi	140/2016	1/320
Meneng	358	p.l	Ataro	140/2016	1/384
Anibare	198	p.l	Bogetsuww	140/2016	1/480

DETERMINATION OF BENEFICIARIES

2. The Nauru Lands Committee has determined that the beneficiaries of the Estate of the late **RYKERS SOLOMON** are:- (a) in respect of the land shown in paragraph one (1) above

DISTRICT	PORTION NO.	NAME OF LAND	BENEFICIARIES	SHARE
Anibare	43	Anera	Fiona Solomon (LTO)	1/8
Meneng	133	Eatobobwe	Fiona Solomon (LTO)	1/14
Meneng	137	Ibwe	as for portion no.133, c.l	Meneng
Meneng	140	Ibwe	- do -	
Anibare	50	Agabwe	Fiona Solomon (LTO)	
Anibare	51	Agabwe	As for Portion no.50, c.l	Anibare
Anibare	70	Adetobage	- do -	
Anibare	185	Idobua	- do -	
Buada	12	Atuowinumor	- do -	
Buada	15	Atero	- do -	
Buada	45	Iyatsi	- do -	
Buada	53	Ijati	- do -	
Buada	65	Idutubwije	- do -	
Buada	97	Dobuadedar	- do -	
Buada	271	Oebuebin	- do -	
Buada	395	Animaeor	- do -	
Meneng	381	Anor	- do -	
Meneng	403	Anor	- do -	
Yaren	336	Atubwinumor	- do -	
Yaren	337	Atubwinumor	- do -	
Yaren	350	Atero	- do -	
Meneng	416	Ijonora	Fiona Solomon (LTO)	1/48
Meneng	445	Tararo	As for Portion no.416, p.l	Meneng

G.N. No.784 / 2016 (cont'd)

Anibare	193	Atekapara	Newman Rykers	1/320
			Joshua Rykers	1/320
			Nathan Rykers	1/320
			Kane Rykers	1/320
Meneng	48	Ueo	Newman Rykers	1/384
			Joshua Rykers	1/384
			Nathan Rykers	1/384
			Kane Rykers	1/384
Meneng	51	Awidainging	As for Portion no.48, p.1	Meneng
Meneng	165	Ataro	Newman Rykers	5/4608
			Joshua Rykers	5/4608
			Nathan Rykers	5/4608
			Kane Rykers	5/4608
Meneng	166	Ataro	As for Portion no.165, c.1	Meneng
Meneng	167	Ataro	- do -	
Meneng	168	Ataro	- do -	
Meneng	169	Ataro	- do -	
Meneng	180	Anaoe	- do -	
Meneng	181	Anaoe	- do -	
Meneng	324	Eateigogoa	Newman Rykers	1/960
			Joshua Rykers	1/960
			Nathan Rykers	1/960
			Kane Rykers	1/960
Meneng	399	Idogobuamwi	As for Portion no.324, p.1	Meneng
Meneng	424	Anaquen	Newman Rykers	1/1200
			Joshua Rykers	1/1200
			Nathan Rykers	1/1200
			Kane Rykers	1/1200
Meneng	435	Karawinuroro	As for Portion no.424, p.1	Meneng
Denigomodu	88	Uroi	Newman Rykers	1/1280
			Joshua Rykers	1/1280
			Nathan Rykers	1/1280
			Kane Rykers	1/1280
Meneng	358	Ataro	Newman Rykers	1/1536
			Joshua Rykers	1/1536
			Nathan Rykers	1/1536
			Kane Rykers	1/1536

G.N. No.784 / 2016 (cont'd)

Anibare	198	Bogetsuiw	Newman Rykers	1/1920
			Joshua Rykers	1/1920
			Nathan Rykers	1/1920
			Kane Rykers	1/1920

Note: Those who disagree with the above determination may appeal to the Supreme Court Registry within 21 days of the publication of this government gazettal.

TYRAN CAPELLE
CHAIRPERSON - NAURU LANDS COMMITTEE

G.N. No. 785 / 2016

1. Determination of the Beneficiaries of the Estate of the late **MARGARET LUCIA HIRAM** of Baitisi District.

ESTATE

The Nauru Lands Committee ascertained that the estate of the late **MARGARET LUCIA HIRAM** had been determined by the decisions of the Nauru Lands Committee (or its predecessor the Lands Committee) to be the owner of the following lands:

DISTRICT	PORTION NO.	TYPE OF LAND	NAME OF LAND	GAZETTE NOTICE OF OWNERSHIP	LTO	SHARE
Aiwo	257	c.l	Yangor	62/2004	L	1/32
Aiwo	266	c.l	Yangor	62/2004	L	1/32
Aiwo	267	c.l	Yangor	62/2004	L	1/32
Aiwo	371	c.l	Atorir	62/2004	L	1/32
Aiwo	477	c.l	Iebe	62/2004	L	1/32
Boe	20	p.l		62/2004	L	1/32
Boe	61	c.l	Atubwinunor	62/2004	L	1/32
Boe	124	c.l	Atinima	62/2004	L	1/32
Buada	120	p.l	Eateidoruwabin	62/2004	L	1/32
Meneng	158	c.l	Yangom	62/2004	L	1/32
Nibok	31	p.l	Adeneounun	62/2004	L	1/32
Nibok	64	p.l	Uroi	62/2004	L	1/32
Nibok	139	c.l	Eatederagabu	62/2004	L	1/32
Nibok	173	c.l	Anakawiduwa	62/2004	L	1/32
Nibok	174	c.l	Ijeduen	62/2004	L	1/32
Meneng	80	c.l	Aquang	62/2004	L	1/40
Aiwo	168	c.l	Yatam,Anerue	62/2004	L	1/64

G.N. No.785 / 2016 (cont'd)

Nibok	5	p.l	Anat	62/2004	L	1/90
Aiwo	28	c.l	Ijatam	62/2004	L	1/96
Aiwo	193	c.l	Ibuge	62/2004	L	1/96
Aiwo	197	c.l	Aiue	62/2004	L	1/96
Aiwo	214	c.l	Idibuge	62/2004	L	1/96
Aiwo	221	c.l	Yangor	62/2004	L	1/96
Aiwo	256	c.l	Anibawo	62/2004	L	1/96
Aiwo	274	c.l	Yangor	62/2004	L	1/96
Aiwo	275	c.l	Yangor	62/2004	L	1/96
Aiwo	276	c.l	Yangor	62/2004	L	1/96
Aiwo	318	p.l	Idunea	62/2004	L	1/96
Boe	28	p.l	Eatetear	62/2004	L	1/96
Boe	41	p.l	Eatetear	62/2004	L	1/96
Boe	159	Z	Eatetear	62/2004	L	1/96
Denigomodu	251	p.l		62/2004	L	1/96
Ijuw	56	c.l	Eateanibain	62/2004	L	1/96
Meneng	370	p.l	Bongibia	62/2004	L	1/96
Nibok	21	p.l	Anat	62/2004	L	1/96
Ijuw	86	p.l	Yunguro	62/2004	L	1/120
Ijuw	102	p.l	Bware	62/2004	L	1/120
Ijuw	109	p.l	Anijo	62/2004	L	1/120
Ijuw	128	c.l	Eatagadauw	62/2006	L	1/120
Meneng	415	p.l	Karawinuroro	62/2004	L	1/120
Boe	64	c.l	Iwugaga	62/2004	L	3/400
Yaren	1	p.l	Eatetear	62/2004	L	1/144
Yaren	375	p.l	F.G.W.S.L	62/2004	L	1/144
Meneng	15	c.l	Anoboroboren	62/2004	L	1/160
Meneng	105	c.l	Irebedi	62/2004	L	1/160
Meneng	290	p.l	Anoboroboren	62/2004	L	1/160
Meneng	302	p.l	Aredeto	62/2004	L	1/160
Meneng	328	p.l	Ianadum	62/2004	L	1/160
Anibare	215	p.l	Irotsin	62/2004	L	1/192
Meneng	69	c.l	Aredeto	62/2004	L	1/320
Meneng	274	p.l	Atuwuro	62/2004	L	1/320
Meneng	297	p.l	Anubwiya	62/2004	L	1/320

G.N. No.785 / 2016 (cont'd)

Meneng	308	p.l	Anubwiya	62/2004	L	1/320
Meneng	433	p.l	Atebi	62/2004	L	1/320
Meneng	68	c.l	Iua	62/2004	L	1/640
Meneng	341	p.l	Ibea	62/2004	L	1/1600
Buada	172	p.l	Atenani	6/1990		71/2160
Anibare	19	c.l	Arateng	6/1990		1/36
Baiti	120	c.l	Aeounun	6/1990		1/72
Baiti	119	c.l	Agoro	6/1990		71/8640
Baiti	148	c.l	Mwiruru	6/1990		1/8640
Baiti	195	p.l	Anakawiduwa	6/1990		71/8640
Baiti	196	p.l	Anoror	6/1990		71/8640
Baiti	205	p.l	Eatetedij	6/1990		71/8640
Ewa	4	c.l	Anora	6/1990		71/8640
Ewa	57	p.l	Abaraiami	6/1990		71/8640
Uaboe	56	p.l	Yadiyuw	6/1990		71/8640
Ijuw	32	c.l	Atayong	53/1990		25/3564
Anabar	12	p.l	Atoweo	6/1990		1/180
Anabar	28	p.l	Guria	6/1990		1/180
Anabar	74	c.l	Uboroboren	6/1990		1/180
Anabar	82	c.l	Arep	6/1990		1/180
Anabar	148	c.l	Badanni	6/1990		1/180
Anibare	196	p.l	Ibab	65/1990		1/180
Anibare	206	p.l	Adetoror	6/1990		1/180
Anibare	244	p.l	Iboror	6/1990		1/180
Anibare	246	p.l	Goiebi	6/1990		1/180
Anibare	247	p.l	Atueo	6/1990		1/180
Anibare	265	p.l	Atubwina	6/1990		1/180
Baiti	12	p.l	Ebeti	6/1990		1/180
Baiti	55	p.l	Atati	6/1990		1/180
Baiti	167	p.l	Ibori	6/1990		1/180
Baiti	169	p.l	Ibori	6/1990		1/180
Ewa	92	p.l	Anuijo	6/1990		1/180
Anibare	360	p.l	Aroeo	86/2005		1/200
Ewa	76	p.l	Mitsijij,Uaboko	53/1990		3/640
Ewa	172	c.l	Deirereinimen	53/1990		25/5346

G.N. No.785 / 2016 (cont'd)

Ewa	190	p.l	Anoero	53/1990		25/5346
Baiti	19	p.l	Metub,Adeta	6/1990		11/2700
Ewa	45	p.l	Idageang	53/1990		1/256
Ijuw	121	p.l	Anebwor	61/1990		1/288
Anabar	48	p.l	Ibweruru	53/1990		1/320
Ewa	166	c.l	Anna	905/1995		1/51840
Baiti	51	p.l	Anemere	6/1990		1/360
Baiti	91	c.l	Atangain	61/1990		1/360
Baiti	99	c.l	Anakawiduwa	61/1990		1/360
Baiti	110	c.l	Anakawiduwa	61/1990		1/360
Anibare	21	c.l	Areteng	6/1990		71/25920
Anibare	23	c.l	Merubo	6/1990		71/25920
Anibare	27	c.l	Merubo	6/1990		71/25920
Anibare	343	c.l	Arateng	6/1990		71/25920
Ewa	148	c.l	Bogetirir	6/1990		71/25920
Anibare	216	p.l	Irotsin	6/1990		71/34560
Anibare	218	p.l	Atekapara	6/1990		71/34560
Ijuw	76	p.l	Bware	53/1990		11/5760
Anibare	388	p.l	Ketawiji	18/1989		7/3840
Anibare	199	p.l	Ibogetiw	6/1990		71/43200
Baiti	189	p.l	Betio	53/1990		1/640
Baiti	203	p.l	Eatetawak	53/1990		1/640
Nibok	81	p.l	Amero	53/1990		1/640
Uaboe	76	c.l	Ewa	53/1990		1/640
Uaboe	92	c.l	Ibitumwararo	53/1990		1/640
Uaboe	100	c.l	Muemewin	53/1990		1/640
Uaboe	139	p.l	Anni	53/1990		1/640
Uaboe	146	c.l	Imwenom	53/1990		1/640
Meneng	417	p.l	Atebawo	95/1997		1/720
Anabar	25	p.l	Queirang	53/1990		3/2560

G.N. No.785 / 2016 (cont'd)

DETERMINATION OF BENEFICIARIES

2. The Nauru Lands Committee has determined that the Beneficiary to the estate of the late **MARGARET LUCIA HIRAM** is: (a) in respect of the land shown in paragraph 1 above

DISTRICT	PORTION NO.	NAME OF LAND	BENEFICIARIES	SHARE
Aiwo	257	Yangor	Bop Adam	1/32
Aiwo	266	Yangor	As for Portion 257, c.1	Aiwo
Aiwo	267	Yangor	- do -	
Aiwo	371	Atorir	- do -	
Aiwo	477	Iebe	- do -	
Boe	20		- do -	
Boe	61	Atubwinunor	- do -	
Boe	124	Atinima	- do -	
Buada	120	Eateidoruwabin	- do -	
Meneng	158	Yangom	- do -	
Nibok	31	Adeneounun	- do -	
Nibok	64	Uroi	- do -	
Nibok	139	Eatederagabu	- do -	
Nibok	173	Anakawiduwa	- do -	
Nibok	174	Ijeduen	- do -	
Meneng	80	Aquang	Bop Adam	1/40
Aiwo	168	Yatam,Anerue	Bop Adam	1/64
Nibok	5	Anat	Bop Adam	1/90
Aiwo	28	Ijatam	Bop Adam	1/96
Aiwo	193	Ibuge	As for Portion 28, c.1	Aiwo
Aiwo	197	Aiue	- do -	
Aiwo	214	Idibuge	- do -	
Aiwo	221	Yangor	- do -	
Aiwo	256	Anibawo	- do -	
Aiwo	274	Yangor	- do -	
Aiwo	275	Yangor	- do -	
Aiwo	276	Yangor	- do -	

G.N. No.785 / 2016 (cont'd)

Aiwo	318	Idunea	- do -	
Boe	28	Eatetear	- do -	
Boe	41	Eatetear	- do -	
Boe	159	Eatetear	- do -	
Denigomodu	251		- do -	
Ijuw	56	Eateanibain	- do -	
Meneng	370	Bongibia	- do -	
Nibok	21	Anat	- do -	
Ijuw	86	Yunguro	Bop Adam	
Ijuw	102	Bware	As for Portion 86, p.1	Ijuw
Ijuw	109	Anijo	- do -	
Ijuw	128	Eatagadauw	- do -	
Meneng	415	Karawinuroro	- do -	
Boe	64	Iwugaga	Bop Adam	3/400
Yaren	1	Eatetear	Bop Adam	1/144
Yaren	375	F.G.W.S.L	As for Portion 64, c.1	Boe
Meneng	15	Anoboroboren	Bop Adam	1/160
Meneng	105	Irebedi	As for Portion 15, c.1	Meneng
Meneng	290	Anoboroboren	- do -	
Meneng	302	Aredeto	- do -	
Meneng	328	Ianadum	- do -	
Anibare	215	Irotsin	Bop Adam	1/192
Meneng	69	Aredeto	Bop Adam	1/320
Meneng	274	Atuwuro	As for Portion 69, c.1	Meneng
Meneng	297	Anubwiya	- do -	
Meneng	308	Anubwiya	- do -	
Meneng	433	Atebi	- do -	
Meneng	68	Iua	Bop Adam	1/640
Meneng	341	Ibea	Bop Adam	1/1600
Buada	172	Atenani	Benna Fritz	71/12960
			Tommy Daniel	71/12960
			Jacco Daniel	71/12960
			Sheena Detageouwa	71/12960
			Bop Adam	71/12960
			Donny Hiram (LTO)	71/12960

G.N. No.785 / 2016 (cont'd)

Anibare	19	Arateng	Benna Fritz	1/216
			Tommy Daniel	1/216
			Jacco Daniel	1/216
			Sheena Detageouwa	1/216
			Bop Adam	1/216
			Donny Hiram (LTO)	1/216
Baiti	120	Aeounun	Benna Fritz	1/432
			Tommy Daniel	1/432
			Jacco Daniel	1/432
			Sheena Detageouwa	1/432
			Bop Adam	1/432
			Donny Hiram (LTO)	1/432
Baiti	119	Agoro	Benna Fritz	71/51840
			Tommy Daniel	71/51840
			Jacco Daniel	71/51840
			Sheena Detageouwa	71/51840
			Bop Adam	71/51840
			Donny Hiram (LTO)	71/51840
Baiti	148	Mwiruru	As for Portion 119, c.l	Baiti
Baiti	195	Anakawiduwa	- do -	
Baiti	196	Anoror	- do -	
Baiti	205	Eatetedij	- do -	
Ewa	4	Anora	- do -	
Ewa	57	Abaraiami	- do -	
Uaboe	56	Yadiyuw	- do -	
Ijuw	32	Atayong	Benna Fritz	25/21384
			Tommy Daniel	25/21384
			Jacco Daniel	25/21384
			Sheena Detageouwa	25/21384
			Bop Adam	25/21384
			Donny Hiram (LTO)	25/21384
Anabar	12	Atoweo	Benna Fritz	1/1080
			Tommy Daniel	1/1080
			Jacco Daniel	1/1080

G.N. No.785 / 2016 (cont'd)

			Sheena Detageouwa	1/1080
			Bop Adam	1/1080
			Donny Hiram (LTO)	1/1080
Anabar	28	Guria	As for Portion 12, p.1	Anabar
Anabar	74	Uboroboren	- do -	
Anabar	82	Arep	- do -	
Anabar	148	Badanni	- do -	
Anibare	196	Ibab	- do -	
Anibare	206	Adetror	- do -	
Anibare	244	Iboror	- do -	
Anibare	246	Goiebi	- do -	
Anibare	247	Atueo	- do -	
Anibare	265	Atubwina	- do -	
Baiti	12	Ebeti	- do -	
Baiti	55	Atati	- do -	
Baiti	167	Ibori	- do -	
Baiti	169	Ibori	- do -	
Ewa	92	Anuijo	- do -	
Anibare	360	Aroeo	Benna Fritz	1/1200
			Tommy Daniel	1/1200
			Jacco Daniel	1/1200
			Sheena Detageouwa	1/1200
			Bop Adam	1/1200
			Donny Hiram (LTO)	1/1200
Ewa	76	Mitsijij,Uaboko	Benna Fritz	1/1280
			Tommy Daniel	1/1280
			Jacco Daniel	1/1280
			Sheena Detageouwa	1/1280
			Bop Adam	1/1280
			Donny Hiram (LTO)	1/1280
Ewa	172	Deirereinimen	Benna Fritz	25/32076
			Tommy Daniel	25/32076
			Jacco Daniel	25/32076
			Sheena Detageouwa	25/32076

G.N. No.785 / 2016 (cont'd)

			Bop Adam	25/32076
			Donny Hiram (LTO)	25/32076
Ewa	190	Anoero	As for Portion 172, c.1	Ewa
Baiti	19	Metub,Adeta	Benna Fritz	11/16200
			Tommy Daniel	11/16200
			Jacco Daniel	11/16200
			Sheena Detageouwa	11/16200
			Bop Adam	11/16200
			Donny Hiram (LTO)	11/16200
Ewa	45	Idageang	Benna Fritz	1/1536
			Tommy Daniel	1/1536
			Jacco Daniel	1/1536
			Sheena Detageouwa	1/1536
			Bop Adam	1/1536
			Donny Hiram (LTO)	1/1536
Ijuw	121	Anebwor	Benna Fritz	1/1728
			Tommy Daniel	1/1728
			Jacco Daniel	1/1728
			Sheena Detageouwa	1/1728
			Bop Adam	1/1728
			Donny Hiram (LTO)	1/1728
Anabar	48	Ibweruru	Benna Fritz	1/1920
			Tommy Daniel	1/1920
			Jacco Daniel	1/1920
			Sheena Detageouwa	1/1920
			Bop Adam	1/1920
			Donny Hiram (LTO)	1/1920
Ewa	166	Anna	Benna Fritz	151/311040
			Tommy Daniel	151/311040
			Jacco Daniel	151/311040
			Sheena Detageouwa	151/311040
			Bop Adam	151/311040
			Donny Hiram (LTO)	151/311040

G.N. No.785 / 2016 (cont'd)

Baiti	51	Anemere	Benna Fritz	1/2160
			Tommy Daniel	1/2160
			Jacco Daniel	1/2160
			Sheena Detageouwa	1/2160
			Bop Adam	1/2160
			Donny Hiram (LTO)	1/2160
Baiti	91	Atangain	As for Portion 51, p.l	151/311040
Baiti	99	Anakawiduwa	- do -	
Baiti	110	Anakawiduwa	- do -	
Anibare	21	Areteng	Benna Fritz	71/155520
			Tommy Daniel	71/155520
			Jacco Daniel	71/155520
			Sheena Detageouwa	71/155520
			Bop Adam	71/155520
			Donny Hiram (LTO)	71/155520
Anibare	23	Merubo	As for Portion 21, c.l	Anibare
Anibare	27	Merubo	- do -	
Anibare	343	Arateng	- do -	
Ewa	148	Bogetirir	- do -	
Anibare	216	Irotsin	Benna Fritz	71/207360
			Tommy Daniel	71/207360
			Jacco Daniel	71/207360
			Sheena Detageouwa	71/207360
			Bop Adam	71/207360
			Donny Hiram (LTO)	71/207360
Anibare	218	Atekapara	As for Portion 216, p.l	Anibare
Ijuw	76	Bware	Benna Fritz	11/34560
			Tommy Daniel	11/34560
			Jacco Daniel	11/34560
			Sheena Detageouwa	11/34560
			Bop Adam	11/34560
			Donny Hiram (LTO)	11/34560
Anibare	388	Ketawiji	Benna Fritz	7/23040
			Tommy Daniel	7/23040

G.N. No.785 / 2016 (cont'd)

			Jacco Daniel	7/23040
			Sheena Detageouwa	7/23040
			Bop Adam	7/23040
			Donny Hiram (LTO)	7/23040
Anibare	199	Ibogetiw	Benna Fritz	71/259200
			Tommy Daniel	71/259200
			Jacco Daniel	71/259200
			Sheena Detageouwa	71/259200
			Bop Adam	71/259200
			Donny Hiram (LTO)	71/259200
Baiti	189	Betio	Benna Fritz	1/3840
			Tommy Daniel	1/3840
			Jacco Daniel	1/3840
			Sheena Detageouwa	1/3840
			Bop Adam	1/3840
			Donny Hiram (LTO)	1/3840
Baiti	203	Eatetawak	As for Portion 189, p.1	Baiti
Nibok	81	Amero	- DO -	
Uaboe	76	Ewa	- DO -	
Uaboe	92	Ibitumwararo	- DO -	
Uaboe	100	Muemewin	- DO -	
Uaboe	139	Anni	- DO -	
Uaboe	146	Imwenom	- DO -	
Meneng	417	Atebawo	Benna Fritz	1/4320
			Tommy Daniel	1/4320
			Jacco Daniel	1/4320
			Sheena Detageouwa	1/4320
			Bop Adam	1/4320
			Donny Hiram (LTO)	1/4320
Anabar	25	Queirang	Benna Fritz	1/5120
			Tommy Daniel	1/5120

G.N. No.785 / 2016 (cont'd)

			Jacco Daniel	1/5120
			Sheena Detageouwa	1/5120
			Bop Adam	1/5120
			Donny Hiram (LTO)	1/5120

Note: Those who disagree with the above determination may appeal to the Supreme Court Registry within 21 days of the publication of this Government Gazettal.

TYRAN CAPELLE
CHAIRPERSON - NAURU LANDS COMMITTEE

G.N. No.786 / 2016

1. Determination of the Beneficiaries of the Estate of the late **JAMES JAPHET DEDIYA.**
ESTATE

The Nauru Lands Committee ascertained that the estate of the late **JAMES JAPHET DEDIYA** had been determined by the decisions of the Nauru Lands Committee (or its predecessor the Lands Committee) to be the owner of the following lands:

DISTRICT	PORTION NO.	TYPE OF LAND	NAME OF LAND	GAZETTE NOTICE OF OWNERSHIP	LTO	SHARE
Meneng	327	p.l	Anemet	282013	LTO	1/1296
Yaren	141	c.l	Aningabwe	282013	LTO	1/1728
Anibare	378	p.l	Merebweren	1342008	LTO	1/1764
Aiwo	300	p.l		1432013	LTO	1/3024
Buada	351	c.l	Bangabanga	282013	LTO	1/3024
Boe	66	c.l	Eidagauwe	282013	LTO	1/3402
Buada	48	p.l	Ijati	282013	LTO	1/3402
Buada	96	p.l	Dobuadedar	282013	LTO	1/3402
Buada	182	p.l	Eatdedabage	282013	LTO	1/3402
Yaren	220	p.l	Aeape	282013	LTO	1/3402
Yaren	329	p.l	Atubwinumor	282013	LTO	1/3402
Buada	267	c.l	Atamaruro	282013	LTO	1/3456
Aiwo	297	p.l		1172013	LTO	1/3888
Aiwo	298	p.l	Anibubu	282013	LTO	1/3888
Buada	38	p.l	Ijati	282013	LTO	1/3888
Buada	43	p.l	Ijati	282013	LTO	1/3888
Anibare	338	p.l	Idonga	282013	LTO	1/6048
Denigomodu	280	c.l	Ariyeyen	282013	LTO	1/6480
Meneng	229	p.l	Anoerara	282013	LTO	1/6804
Buada	149	p.l	Anota	282013	LTO	1/10080
Aiwo	333	p.l	Bwitani	282013	LTO	1/17010

G.N. No.786 / 2016 (cont'd)

Anibare	128	p.l	Atibenar	282013	LTO	1/17010
Anibare	139	p.l	Ubwidugu,Bwidugu	282013	LTO	1/17010
Boe	77	c.l	Atongeboge	282013	LTO	1/17010
Yaren	249	p.l	Ateijibab	282013	LTO	1/17010
Yaren	318	p.l	Anamaragi	282013	LTO	1/17010
Yaren	319	p.l	Anamaragi	282013	LTO	1/17010
Meneng	228	p.l	Atongoque	282013	LTO	1/17280
Meneng	262	p.l	Anemet	282013	LTO	1/17280
Buada	146	p.l	Anota	282013	LTO	1/18144
Buada	154	p.l	Anota	282013	LTO	1/18144
Anabar	2	p.l	Oijabab,Tboror	282013	LTO	1/480
Anabar	5	p.l	Aroeo	282013	LTO	1/480
Anetan	4	p.l	Anobononijo	282013	LTO	1/480
Anetan	11	p.l	Atebao	282013	LTO	1/480
Anibare	393	p.l	Tararo	282013	LTO	1/480
Ewa	10	c.l	Atiemanenna	282013	LTO	1/480
Ewa	38	p.l	Idageang	282013	LTO	1/480
Ewa	55	p.l	Anaoa	282013	LTO	1/480
Ewa	60	p.l	Atanok	282013	LTO	1/480
Ewa	67	p.l	Anoeror	282013	LTO	1/480
Ewa	73	p.l	Aror	282013	LTO	1/480
Ewa	86	p.l	Akoro	282013	LTO	1/480
Ewa	110	c.l	Ijungureb	282013	LTO	1/480
Ewa	143	c.l	Anuer	282013	LTO	1/480
Ewa	159	c.l	Uboroboren	282013	LTO	1/480
Ewa	169	c.l	Ijungureb	282013	LTO	1/480
Ewa	182	c.l	Madang	282013	LTO	1/480
Ewa	188	c.l	Arean	282013	LTO	1/480
Ewa	189	c.l	Anuer	282013	LTO	1/480
Anibare	207	p.l	Anurung	282013	LTO	1/864
Anibare	224	p.l	Anuer	282013	LTO	1/864
Ewa	99	p.l	Ormangang	282013	LTO	1/960
Anabar	2	p.l	Oijabab,Tboror	191983		1/20
Anabar	5	p.l	Aroeo	191983		1/20
Anetan	4	p.l	Anobononijo	191983		1/20
Anetan	11	p.l	Atebao	551984		1/20
Anibare	393	p.l	Tararo	551984		1/20
Ewa	10	c.l	Atiemanenna	551984		1/20
Ewa	38	p.l	Idageang	551984		1/20
Ewa	55	p.l	Anaoa	551984		1/20
Ewa	60	p.l	Atanok	551984		1/20

G.N. No.786 / 2016 (cont'd)

Ewa	67	p.l	Anoeror	551984		1/20
Ewa	73	p.l	Aror	551984		1/20
Ewa	86	p.l	Akoro	551984		1/20
Ewa	110	c.l	Ijungureb	551984		1/20
Ewa	143	c.l	Anuer	551984		1/20
Ewa	159	c.l	Uboroboren	551984		1/20
Ewa	169	c.l	Ijungureb	551984		1/20
Ewa	182	c.l	Madang	551984		1/20
Ewa	188	c.l	Aream	551984		1/20
Ewa	189	c.l	Anuer	551984		1/20
Anibare	207	p.l	Anurung	551984		1/36
Anibare	224	p.l	Anuer	551984		1/36
Ewa	99	p.l	Ormangang	551984		1/40
Buada	14	p.l	Umwawawa	391988	LTO	7/180
Yaren	339	p.l	Umwawawa	391988	LTO	7/180
Boe	121	c.l	Anakarauwe	391988	LTO	1/30
Aiwo	186	p.l	Ibaidabu	391988	LTO	1/60
Boe	12	p.l		391988	LTO	1/60
Boe	23	p.l		391988	LTO	1/60
Boe	32	p.l		391988	LTO	1/60
Boe	42	p.l	Adenenera	391988	LTO	1/60
Boe	127	c.l	Iruwitaquane	391988	LTO	1/60
Yaren	250	p.l	Anoeoui Idigaga	391988	LTO	1/60
Boe	168	c.l	Eatdeiburenimadang	391988	LTO	17/1350
Boe	54	c.l	Gareow	391988	LTO	1/90
Boe	150	c.l	Atubwinumar	391988	LTO	1/90
Boe	138	c.l	Anbwija	391988	LTO	1/120
Boe	144	c.l	Anubwija	391988	LTO	1/120
Boe	145	c.l	Anubwija	391988	LTO	1/120
Yaren	27	c.l	Iro	391988	LTO	1/300

DETERMINATION OF BENEFICIARIES

2. The Nauru Lands Committee has determined that the beneficiaries to the estate of the late **JAMES JAPHET DEDIYA** are;
 (a) in respect of the lands shown in paragraph 1 above

DISTRICT	PORTION NO.	NAME OF LAND	BENEFICIARIES	SHARE
Meneng	327	Anemet	Darren Adeang	1/1296
Yaren	141	Aningabwe	Darren Adeang	1/1728
Anibare	378	Merebweren	Darren Adeang	1/1764
Aiwo	300		Darren Adeang	1/3024

G.N. No.786 / 2016 (cont'd)

Buada	351	Bangabanga	As for Portion 300, P.1	Aiwo
Boe	66	Eidagauwe	Darren Adeang	1/3402
Buada	48	Ijati	As for Portion 66, C.1	Boe
Buada	96	Dobuadedar	- do -	
Buada	182	Eatdedabage	- do -	
Yaren	220	Aeape	- do -	
Yaren	329	Atubwinumor	- do -	
Buada	267	Atamaruro	Darren Adeang	1/3456
Aiwo	297		Darren Adeang	1/3888
Aiwo	298	Anibubu	As for Portion 297, P.1	Aiwo
Buada	38	Ijati	- do -	
Buada	43	Ijati	- do -	
Anibare	338	Idonga	Darren Adeang	1/6048
Denigomodu	280	Ariyeyen	Darren Adeang	1/6480
Meneng	229	Anoerara	Darren Adeang	1/6804
Buada	149	Anota	Darren Adeang	1/10080
Aiwo	333	Bwitani	Darren Adeang	1/17010
Anibare	128	Atibenar	As for Portion 333, P.1	Aiwo
Anibare	139	Ubwidugu,Bwidugu	- do -	
Boe	77	Atongeboge	- do -	
Yaren	249	Ateijibab	- do -	
Yaren	318	Anamaragi	- do -	
Yaren	319	Anamaragi	- do -	
Meneng	228	Atongoque	Darren Adeang	1/17280
Meneng	262	Anemet	As for Portion 228, P.1	Meneng
Buada	146	Anota	Darren Adeang	1/18144
Buada	154	Anota	As for Portion 146, P.1	Buada
Anabar	2	Oijabab,Tboror	Darren Adeang	1/480
Anabar	5	Aroeo	As for Portion 2, P.1	Anabar
Anetan	4	Anobononijo	- do -	
Anetan	11	Atebao	- do -	
Anibare	393	Tararo	- do -	
Ewa	10	Atiemanenna	- do -	
Ewa	38	Idageang	- do -	
Ewa	55	Anaoa	- do -	
Ewa	60	Atanok	- do -	
Ewa	67	Anoeror	- do -	
Ewa	73	Aror	- do -	
Ewa	86	Akoro	- do -	
Ewa	110	Ijungureb	- do -	
Ewa	143	Anuer	- do -	
Ewa	159	Uboroboren	- do -	

G.N. No.786 / 2016 (cont'd)

Ewa	169	Ijungureb	- do -	
Ewa	182	Madang	- do -	
Ewa	188	Aream	- do -	
Ewa	189	Anuer	- do -	
Anibare	207	Anurung	Darren Adeang	1/864
Anibare	224	Anuer	As for Portion 207, P.1	Anibare
Ewa	99	Ormangang	Darren Adeang	1/960
Anabar	2	Oijabab,Tboror	Jamien Dediya	1/40
			Jennien Olsson	1/40
			Mary Dediya (LTO)	1/60
			Unique Narayan	1/60
			Yoshiko Deireregea (Unique Trustee)	1/60
			Brandon Itsimaera	1/60
			Jansen Itsimaera	1/60
			Jesse Tebouwa	1/60
Anabar	5	Aroeo	As for Portion 2, P.1	Anabar
Anetan	4	Anobononijo	- do -	
Anetan	11	Atebao	- do -	
Anibare	393	Tararo	- do -	
Ewa	10	Atiemanenna	- do -	
Ewa	38	Idageang	- do -	
Ewa	55	Anaoa	- do -	
Ewa	60	Atanok	- do -	
Ewa	67	Anoeror	- do -	
Ewa	73	Aror	- do -	
Ewa	86	Akoro	- do -	
Ewa	110	Ijungureb	- do -	
Ewa	143	Anuer	- do -	
Ewa	159	Uboroboren	- do -	
Ewa	169	Ijungureb	- do -	
Ewa	182	Madang	- do -	
Ewa	188	Aream	- do -	
Ewa	189	Anuer	- do -	
Anibare	207	Anurung	Jamien Dediya	1/72
			Jennien Olsson	1/72
			Mary Dediya (LTO)	1/108
			Unique Narayan	1/108
			Yoshiko Deireregea (Unique Trustee)	1/108
			Brandon Itsimaera	1/108
			Jansen Itsimaera	1/108

G.N. No.786 / 2016 (cont'd)

			Jesse Tebouwa	1/108
Anibare	224	Anuer	As For Portion 207, P.L	Anibare
Ewa	99	Ormangang	Jamien Dediya	1/80
			Jennien Olsson	1/80
			Mary Dediya (LTO)	1/240
			Unique Narayan	1/240
			Yoshiko Deireregea (Unique Trustee)	1/240
			Brandon Itsimaera	1/240
			Jansen Itsimaera	1/240
			Jesse Tebouwa	1/240
Buada	14	Umwanawa	Brandon Itsimaera	7/360
			Jansen Itsimaera	7/360
Yaren	339	Umwanawa	As For Portion 14, P.L	Buada
Boe	121	Anakarauwe	Brandon Itsimaera	1/60
			Jansen Itsimaera	1/60
Aiwo	186	Ibaidabu	Brandon Itsimaera	1/120
			Jansen Itsimaera	1/120
Boe	12		As For Portion 186, P.L	Aiwo
Boe	23		- Do -	
Boe	32		- Do -	
Boe	42	Adenenera	- Do -	
Boe	127	Iruwitaquane	- Do -	
Yaren	250	Anoeoui Idigaga	- Do -	
Boe	168	Eatdeiburenimadang	Brandon Itsimaera	17/2700
			Jansen Itsimaera	17/2700
Boe	54	Gareow	Brandon Itsimaera	1/180
			Jansen Itsimaera	1/180
Boe	150	Atubwinumar	As For Portion 54, C.L	Boe
Boe	138	Anbwija	Brandon Itsimaera	1/240
			Jansen Itsimaera	1/240
Boe	144	Anubwija	As For Portion 138, C.L	Boe
Boe	145	Anubwija	Brandon Itsimaera	1/600
			Jansen Itsimaera	1/600

NOTE 1: Those who disagree with the above determination may appeal to the Supreme Court Registry within 21 days of the publication of this Government Gazette.

Note 2: Unique Narayan Trustee for Yoshiro Deireregea.

TYRAN CAPELLE
CHAIRPERSON - NAURU LANDS COMMITTEE

G.N. No.787 / 2016

PERSONALTY ESTATE OF BEULAH DEDUNA

The Nauru Lands Committee has determined the estate of above named deceased and agreed that the estate should be divided in the following manner: -

DECEASED	SOURCE OF INCOME	BENEFICIARIES	SHARE
BEULAH DEDUNA	All monies, Rentals, Royalties,	Derrick Deduna Delphina Daniel Dei-lyn Deduna	1/3 1/3 1/3

NOTE; Please effect distribution immediately.

TYRAN CAPELLE
CHAIRPERSON - NAURU LANDS COMMITTEE

G.N. No.788 / 2016

1. Determination of the Beneficiaries of the Estate of the late **BEULAH DEDUNA**.

ESTATE

The Nauru Lands Committee ascertained that the estate of the late **BEULAH DEDUNA** had been determined by the decisions of the Nauru Lands Committee (or its predecessor the Lands Committee) to be the owner of the following lands:

DISTRICT	PORTION NO.	NAME OF LAND	TYPE OF LAND	GAZETTE NOTICE OF OWNERSHIP	SHARE
Anibare	69	Adetobage	c.l	12/1992	1/4
Anibare	286	Akaraeoni	p.l	12/1992	1/4
Meneng	149	Anugiogia	c.l	12/1992	1/4
Meneng	150	Anugiogia	c.l	12/1992	1/4
Meneng	151	Anoboreidi	c.l	12/1992	1/4
Meneng	152	Anoboreidi	c.l	12/1992	1/4
Denigomodu	24	Denigomodu	c.l	12/1992	1/8
Meneng	379	Ideto	p.l	12/1992	3/32
Meneng	130	Aratsi	c.l	12/1992	1/12
Meneng	352	Atuw	p.l	12/1992	17/256
Aiwo	199	Aiue	c.l	71/1998	1/16
Anibare	24	Arateng	c.l	12/1992	1/16
Anibare	25	Arateng	c.l	12/1992	1/16
Anibare	208	Anurung	p.l	12/1992	1/16

G.N. No.788 / 2016 (cont'd)

Anibare	239	Ateborobor	p.l	12/1992	1/16
Anibare	296	Eatdedogi	c.l	12/1992	1/16
Buada	213	Anoreo	c.l	71/1998	1/16
Buada	313	Oreb	c.l	71/1998	1/16
Buada	314	Aromwemwe	c.l	71/1998	1/16
Buada	315	Ianemara	c.l	71/1998	1/16
Buada	377	Akauw	p.l	12/1992	1/16
Meneng	47	Areraipong	c.l	12/1992	1/16
Meneng	129	Aratsi	c.l	12/1992	1/16
Meneng	142	Karawinroro	c.l	12/1992	1/16
Meneng	345	Kiwowo	p.l	12/1992	1/16
Meneng	346	Magenae	p.l	12/1992	1/16
Meneng	347	Magenae	p.l	12/1992	1/16
Meneng	349	Karawinuroro	p.l	12/1992	1/16
Meneng	362	Karawinuroro	p.l	12/1992	1/16
Meneng	364	Karawinuroro	p.l	12/1992	1/16
Meneng	365	Karawinuroro	p.l	12/1992	1/16
Meneng	367	Karawinuroro	p.l	12/1992	1/16
Meneng	368	Karawinuroro	p.l	12/1992	1/16
Meneng	376	Anoror	p.l	12/1992	1/16
Meneng	377	Anga,Karawinororo	p.l	12/1992	1/16
Meneng	378	Megenae	p.l	12/1992	1/16
Meneng	382	Anoror	p.l	12/1992	1/16
Meneng	383	Anoror	p.l	12/1992	1/16
Meneng	385	Anoror	p.l	12/1992	1/16
Meneng	387	Anoror	p.l	12/1992	1/16
Meneng	390	Abio	p.l	12/1992	1/16
Meneng	391	Anoror	p.l	12/1992	1/16
Meneng	413	Atowedudu	c.l	64/1993	1/16
Buada	146	Anota	p.l	71/1998	13/224
Buada	149	Anota	p.l	71/1998	13/224
Buada	154	Anota	p.l	71/1998	13/224
Meneng	231	Ugauwak	p.l	12/1992	1/24
Meneng	329	Ijuwinuweron	p.l	12/1992	1/24
Buada	267	Atamaruro	c.l	71/1998	5/128
Boe	66	Eidagauwe	c.l	71/1998	13/336
Buada	48	Ijati	p.l	71/1998	13/336
Buada	96	Dobuadedar	p.l	71/1998	13/336
Buada	182	Eatdedabage	p.l	71/1998	13/336
Yaren	220	Aeape	p.l	71/1998	13/336

G.N. No.788 / 2016 (cont'd)

Yaren	329	Atubwinumor	p.l	71/1998	13/336
Aiwo	300		p.l	143/2013	1/28
Buada	351	Bangabanga	c.l	12/1992	1/28
Buada	148	Anota	p.l	71/1998	1/32
Meneng	229	Anoerara	p.l	71/1998	13/672
Anibare	338	Idonga	p.l	12/1992	1/56
Anibare	378	Merebweren	p.l	134/2008	1/56
Meneng	340	Ibea	p.l	12/1992	1/64
Ijuw	109	Anijo	p.l	12/1992	1/96
Meneng	324	Eateigogoa	p.l	71/1998	1/96
Yaren	289	Udueni	p.l	12/1992	1/96
Meneng	228	Atongoque	p.l	71/1998	1/128
Meneng	262	Anemet	p.l	71/1998	1/128
Aiwo	333	Bwitani	p.l	71/1998	13/1680
Anibare	128	Atibenar	p.l	71/1998	13/1680
Anibare	139	Ubwidugu,Bwidugu	p.l	71/1998	13/1680
Boe	77	Atongeboqe	c.l	71/1998	13/1680
Yaren	249	Ateijibab	p.l	71/1998	13/1680
Yaren	318	Anamaragi	p.l	71/1998	13/1680
Yaren	319	Anamaragi	p.l	71/1998	13/1680

DETERMINATION OF BENEFICIARIES

2. The Nauru Lands Committee has determined that the beneficiaries to the estate of the late **BEULAH DEDUNA** are:

(a) in respect of the lands shown in paragraph 1 above

DISTRICT	PORTION NO.	NAME OF LAND	BENEFICIARIES	SHARES
Anibare	69	Adetobage	Derrick Deduna	1/12
			Delphina Daniel	1/12
			Dei-lyn Deduna	1/12
Anibare	286	Akaraeoni	As for Portion no.69, C.L	Anibare
Meneng	149	Anugiogia	- do -	
Meneng	150	Anugiogia	- do -	
Meneng	151	Anoboreidi	- do -	
Meneng	152	Anoboreidi	- do -	
Denigomodu	24	Denigomodu	Derrick Deduna	1/24
			Delphina Daniel	1/24
			Dei-lyn Deduna	1/24

G.N. No.788 / 2016 (cont'd)

Meneng	379	Ideto	Derrick Deduna	1/32
			Delphina Daniel	1/32
			Dei-lyn Deduna	1/32
Meneng	130	Aratsi	Derrick Deduna	1/36
			Delphina Daniel	1/36
			Dei-lyn Deduna	1/36
Meneng	352	Atuw	Derrick Deduna	17/768
			Delphina Daniel	17/768
			Dei-lyn Deduna	17/768
Aiwo	199	Aiue	Derrick Deduna	1/48
			Delphina Daniel	1/48
			Dei-lyn Deduna	1/48
Anibare	24	Arateng	As for Portion no.199, C.L	Aiwo
Anibare	25	Arateng	- do -	
Anibare	208	Anurung	- do -	
Anibare	239	Ateborobor	- do -	
Anibare	296	Eatdedogi	- do -	
Buada	213	Anoreo	- do -	
Buada	313	Oreb	- do -	
Buada	314	Aromwemwe	- do -	
Buada	315	Ianemara	- do -	
Buada	377	Akauw	- do -	
Meneng	47	Areraipong	- do -	
Meneng	129	Aratsi	- do -	
Meneng	142	Karawinroro	- do -	
Meneng	345	Kiwowo	- do -	
Meneng	346	Magenae	- do -	
Meneng	347	Magenae	- do -	
Meneng	349	Karawinuroro	- do -	
Meneng	362	Karawinuroro	- do -	
Meneng	364	Karawinuroro	- do -	
Meneng	365	Karawinuroro	- do -	
Meneng	367	Karawinuroro	- do -	
Meneng	368	Karawinuroro	- do -	
Meneng	376	Anoror	- do -	
Meneng	377	Anga,Karawinororo	- do -	
Meneng	378	Megenae	- do -	
Meneng	382	Anoror	- do -	
Meneng	383	Anoror	- do -	

G.N. No.788 / 2016 (cont'd)

Meneng	385	Anoror	- do -	
Meneng	387	Anoror	- do -	
Meneng	390	Abio	- do -	
Meneng	391	Anoror	- do -	
Meneng	413	Atowedudu	- do -	
Buada	146	Anota	Derrick Deduna	13/672
			Delphina Daniel	13/672
			Dei-lyn Deduna	13/672
Buada	149	Anota	As for Portion no.146, P.L	Buada
Buada	154	Anota	- do -	
Meneng	231	Ugauwak	Derrick Deduna	1/72
			Delphina Daniel	1/72
			Dei-lyn Deduna	1/72
Meneng	329	Ijuwinuweron	As for Portion no.231, P.L	Meneng
Buada	267	Atamaruro	Derrick Deduna	5/384
			Delphina Daniel	5/384
			Dei-lyn Deduna	5/384
Boe	66	Eidagauwe	Derrick Deduna	13/1008
			Delphina Daniel	13/1008
			Dei-lyn Deduna	13/1008
Buada	48	Ijati	As for Portion no.66, C.L	Boe
Buada	96	Dobuadedar	- do -	
Buada	182	Eatdedabage	- do -	
Yaren	220	Aeape	- do -	
Yaren	329	Atubwinumor	- do -	
Aiwo	300		Derrick Deduna	1/84
			Delphina Daniel	1/84
			Dei-lyn Deduna	1/84
Buada	351	Bangabanga	As for Portion no.300, P.L	Aiwo
Buada	148	Anota	Derrick Deduna	1/96
			Delphina Daniel	1/96
			Dei-lyn Deduna	1/96
Meneng	229	Anoerara	Derrick Deduna	13/2016
			Delphina Daniel	13/2016
			Dei-lyn Deduna	13/2016
Anibare	338	Idonga	Derrick Deduna	1/168
			Delphina Daniel	1/168
			Dei-lyn Deduna	1/168
Anibare	378	Merebweren	As for Portion no.338, P.L	Anibare
Meneng	340	Ibea	Derrick Deduna	1/192
			Delphina Daniel	1/192
			Dei-lyn Deduna	1/192

G.N. No.788 / 2016 (cont'd)

Ijuw	109	Anijo	Derrick Deduna	1/288
			Delphina Daniel	1/288
			Dei-lyn Deduna	1/288
Meneng	324	Eateigogoa	As for Portion no.109, P.L	Ijuw
Yaren	289	Udueni	- do -	
Meneng	228	Atongoque	Derrick Deduna	1/384
			Delphina Daniel	1/384
			Dei-lyn Deduna	1/384
Meneng	262	Anemet	As for Portion no.228, P.L	Meneng
Aiwo	333	Bwitani	Derrick Deduna	13/5040
			Delphina Daniel	13/5040
			Dei-lyn Deduna	13/5040
Anibare	128	Atibenar	As for Portion no.333, P.L	Aiwo
Anibare	139	Ubwidugu,Bwidugu	- do -	
Boe	77	Atongeboqe	- do -	
Yaren	249	Ateijibab	- do -	
Yaren	318	Anamaragi	- do -	
Yaren	319	Anamaragi	- do -	

Note: Those who disagree with the above determination may appeal to the Supreme Court Registry within 21 days of the publication of this government gazettal.

TYRAN CAPELLE
CHAIRPERSON - NAURU LANDS COMMITTEE

G.N. No.789 / 2016

LAND DETERMINATION

The Nauru Lands Committee has determined the beneficiaries and share to the land below as specified hereunder:

DISTRICT	PTN	LAND CLASS	LAND NAME	ORIGINAL OWNER	SHARE	REFERENCE	FORMER OWNER	OWNER/S NAME	SHARE
Anibare	409	CL	UBONEIDA/ATEMOR	EIPOGIO	ALL	LRB 1928	Addi Adip 1/4	Aingimea, Nylon	1/16
						PAGE 142	GN 76/2001	Addi, Vernier	1/16
								Addi, Trevino	1/80
								Addi, Bambino	1/80
								Addi, Dallas	1/80
								Addi, Kamala	1/80
								Gobure, Tricia	1/80
								Addi, Bobeyeruk	1/112
								Demingauwe, De-Silva	1/112
								Addi, Donovan	1/112
								Dediya, Mary (Lto)	1/112
								Fritz, Mele	1/112
								Tatum, Rhonda	1/112
								Detabene, Shebana	1/112
							Josepha Eona (Aeomage) 1/4	Aeomage, Daniel	1/28

G.N. No.789 / 2016 (cont'd)

							GN 43/1969	Gobure, Elizabeth	1/28
								Thoma, Louisa	1/28
								Buramen, Sobina	1/28
								Gobure, Stella	1/28
								Aeomage, Ondrea	1/56
								Hubert, Odessa	1/56
								Bop, Lorraine	1/84
								Gobure, Katherine	1/84
								Adire, Kerina	1/84
							Eideranago Kun 1/4	Kun, James	1/20
							GN 01/1970	Kun, Reke	1/20
								Kun, Kia	1/40
								Kun, Twitty	1/40
							Jennifer H (T/Tee)	Degia, Chantele	1/100
								Harris, Jennifer	1/100
							Marsha P (T/Tee)	Tabaia, Kowodo	1/100
								Tabaia, Veronica	1/100
								Tabaia, Sarah	1/100
								Caleb , Juliana	1/120
								Degia , Alauma	1/120
								Degia , Glynn (Lto)	1/120

G.N. No.789 / 2016 (cont'd)

								Degia , Sparkle	1/120
								Deireragea, Janice	1/120
								Kun Fromina	1/120
							Eibogoneida Hubert 1/4	Hubert, Scott	1/32
							GN 47/1968	Hubert, Shyeye	1/32
								Reydon, Pheds	1/32
								Hubert, Sanjay	1/64
								Hubert, Dominic	1/64
								Harris, Barret	1/160
								Harris, Gloria	1/160
								Adeang, Nightingale	1/160
								Hubert, Anne	1/160
								Hubert, Tars (Lto)	1/160
								Solomon, Brigid	1/320
								Moses Sussanah	1/320
								Baguga Anesca Belle	1/320
								Tamakin Vada Beleza	1/320
								Grundler Mandell	1/320

G.N. No.789 / 2016 (cont'd)

								Grundler Edward	1/320
								Mwardedaga, Brigida	1/320
								Grundler, Winen	1/320
								Moses, Pieta	1/320
								Kepae, Alvita	1/352
								Kepae, Jeremy	1/352
								Kepae, Johannes	1/352
								Kepae, John	1/352
								Kepae, Mahdi	1/352
								Kepae, Michael	1/352
								Kepae, Toneke	1/352
								Kepae, Waigani	1/352
								Dagagio, Margaritta	1/352
								Daoe, Olga	1/352
								Hubert, Andrew	1/352
								Menke, Bernadette	1/352
								Laeo, Christeva	1/352
								Hubert, Ivan	1/352
								Hubert, Jason	1/352
								Hubert, Lawrence	1/352
								Hubert, Nicholas	1/352
								Jeremiah, Yolana	1/352

G.N. No.789 / 2016 (cont'd)

								Jeremiah Michael	1/352
								Grundler, Ewidamur	1/640
								Grundler, Cannan	1/640
								Dediya, Jorita	1/704
								Dediya, Joset	1/704
								Hubert, Georgina	1/1408
								Hubert, Ahumaz	1/1408
								Hubert, Lemee	1/1408
								Hubert, Whilan	1/1408
								Kepae, Chucky	1/2112
								Kepae, Della	1/2112
								Kepae, Felix	1/2112
								Kepae, Francine	1/2112
								Kepae, Jordan	1/2112
								Kepae, Lugano	1/2112

Note: Those who disagree with the above determination may appeal to the Supreme Court Registry within 21 days of the publication of this government gazettal.

TYRAN CAPELLE
CHAIRPERSON - NAURU LANDS COMMITTEE

LAND DETERMINATION

The Nauru Lands Committee has determined the beneficiaries and shares to the land below as specified hereunder

DISTRICT	LAND PORTION	LAND CLASS	LAND NAME	ORIGINAL OWNER	SHARE	REF	PROPOSED OWNER	OWNER/S NAME	SHARE
Anibare	410	C	UBONEIDA/AEMOR	DUNGAUW	ALL	LRB 1928	Eigabeatsi Dick	Detenamo, Ellarmaine	1/5
						PAGE 243	GN 122/13	Scotty Charmaine	1/5
								Dick Tremaine	1/5
								Dick Jamaine	1/5
								Finch Krystalmaine	1/5

Note: Those who disagree with the above determination may appeal to the Supreme Court Registry within 21 days of the publication of this government gazettal.

TYRAN CAPELLE
CHAIRPERSON - NAURU LANDS COMMITTEE

G.N. No.789 / 2016 (cont'd)

LAND DETERMINATION

The Nauru Lands Committee has determined the beneficiaries and shares to the land below as specified hereunder

DISTRICT	LAND PORTION	LAND CLASS	LAND NAME	ORIGINAL OWNERS	SHARE	REF	PROPOSED OWNER	OWNERS/NAME	SHARE
Anibare	411	CL	DOWIWI	EIDOGOT	ALL	LRB 1928	AKI (1/6)	Teboua, Eiriere	1/54
						PAGE 142	GN 45/79	Scotty, Nerema	1/54
								Garabwan, Nei Tam	1/54
								Teboua, Roere	1/54
								Detenamo, Kate	1/54
								Thoma Preston (Lto)	1/54
								Dediya, Zarine	1/72
								Aingimea, Teen (Lto)	1/108
								Akubor, Anthony	1/216
								Cecil, Monisa	1/216
								Akubor, Teresa	1/216
								Akubor, Belson	1/216
								Dediya, Dante	1/216
								Dediya, Deliah	1/216
								Jose, Della	1/216

G.N. No.789 / 2016 (cont'd)

							DERANGATAMO (1/6)	Akubor, Fiona	7/234
							GN 15/80	Akubor, Barbara	2/117
								Akubor, Bernard	2/117
								Akubor, Christopher	2/117
								Heinrich, Emanuela	2/117
								Akubor, Michael	2/117
								Dageago, Plumeria	2/117
								Star, Serafina	2/117
								Akubor, Leominosa	2/117
							DIODAGE (1/6)	Akubor, Andrew	2/21
							GN 12/89	Akubor, Lorna (Lto)	1/14
							EBENAIJE JOHN (1/6)	Akubor, John	1/6
							GN 20/70		
							JULIUS (1/6)	Akubor, Charlie	1/36
							GN 47/74	Ekwona, Presnime (Lto)	1/36
								Jone, Gerard	1/36

G.N. No.789 / 2016 (cont'd)

								Stephen, Emiliana	2/143
								Menke, Enid	1/78
								Jeremiah, Jesse	1/286
								Jeremiah, Godfrey	1/286
								Jeremiah, Calistus	1/286
								Grundler, Junko	1/286
								Akubor, Carledette	1/572
								Akubor, Caroline (Lto)	1/572
								Akubor, Charlena	1/572
								Akubor, Kane	1/572
								Akubor, Martin	1/572
								Akubor, Meshach	1/572
								Akubor, Nash	1/572
								Akubor, Valesha	1/572
								Akubor, Baldon	1/858
								Akubor, Daverick	1/858
								Akubor, Demascus	1/858
								Akubor, Gad	1/858
								Akubor, Loriana	1/858

G.N. No.789 / 2016 (cont'd)

								Akubor, Lorina	1/858
								Akubor, Nora (Lto)	1/858
								Akubor, Rico	1/858
								Akubor, Rorina	1/858
								Akubor, Violet	1/858
								Daniel, Floriana	1/858
								Giouba, Florina	1/858

Note: Those who disagree with the above determination may appeal to the Supreme Court Registry within 21 days of the publication of this government gazettal.

TYRAN CAPELLE
CHAIRPERSON - NAURU LANDS COMMITTEE

G.N. No.789 / 2016 (cont'd)

LAND DETERMINATION

The Nauru Lands Committee has determined the beneficiaries and shares to the land below as specified hereunder:

DISTRICT	LAND PORTION	LAND CLASS	LAND NAME	ORIGINAL OWNERS	SHARE	REF	PROPOSED OWNERS	PRESENT OWNERS	SHARE
Anibare	412	CL	GOWANABA	EIDABWEDERI	1/2	LRB 1928	Eidabuagaga (1/6)	Eobob, Romys	1/54
						PAGE 190	GN 33/69	Joseph, Eikaura	1/108
								Karl, Ada (Lto)	1/216
								Karl, Brene	1/216
								Karl, Hansen	1/216
								Karl, Paulita	1/216
								Karl, Queenie	1/216
								Karl Edwina	1/252
								Dowiyogo, Euphemia	1/252
								Karl, Samuel	1/252
								Aremwa, Sharon	1/252
								Emiu, Yvonne	1/252
								Capelle, Reagan	1/252
								Bill, Jeff	1/288
								Bill, Axton	1/288
								Bill, Juro	1/288
								Bill, Jon-Cole	1/288
								Bill, Sabra	1/288

G.N. No.789 / 2016 (cont'd)

								Taleka, Leanna	1/288
								Dabwido, Sabina	1/288
								Bill, Indy	1/288
								Pulvera Cindy,R, E	1/324
								Karl, Saim	1/324
								Karl, Rommald	1/324
								Karl, Emerson	1/324
								Karl, Fredwin	1/324
								Karl, Regan	1/324
								Harris Anthony, P	1/324
								Eobob, Romys	1/324
								Karl, Frigette	1/324
								Harris Fredrick, D	1/324
								Harris Paul, Z	1/324
								Harris Wendie, R, L	1/324
								Karl, Max	1/324
								Karl, Nicholas	1/324
								Karl, Penelope	1/324
								Neneiya Natalie,L, E	1/324
								Karl, Babylon	1/504
								Karl, Elisha	1/504
								Harris Kairao (Lto)	1/648
								Harris, Narrah	1/648
								Giouba, Gemariah	1/1296
								Giouba, Melanie	1/1296

G.N. No.789 / 2016 (cont'd)

								Giouba, Peter-Jack	1/1296
								Giouba, Phillip-John	1/1296
								Teabuge, Timothy	1/1512
								Caleb, Trini	1/1512
								Thoma, Trixie	1/1512
								Duburiya, Judina	1/1512
								Dagagio, Trinina	1/1512
								Teabuge, Geoffrey	1/1512
								Teabuge, Joseph-Karl	1/1512
							Ejigogeow (1/6)	Grundler, Almi	11/336
							GN 33/69	Abere, Hiromi	11/336
								Akubor, Lorna (Lto)	1/48
								Detabouw, Abere	11/2688
								Detabouw, Ashly	11/2688
								Detabouw, Eigubwe	11/2688
								Detabouw, Ikimago	11/2688
								Detabouw, Lucette	11/2688
								Detabouw, Lucy (Lto)	11/2688
								Detabouw, Margaret	11/2688
								Detabouw, Wang	11/2688
								Aremwa, Sharon	1/84
								Ephraim, Eiyamo	1/84
								Ratabwiy, Masco	1/252

G.N. No.789 / 2016 (cont'd)

								Ratabwi, Syntyche	1/252
								Ratabwi, Tira	1/252
								Teabuge, Timothy	1/588
								Caleb, Trini	1/588
								Thoma, Trixie	1/588
								Duburiya, Judina	1/588
								Dagagio, Trinina	1/588
								Teabuge, Geoffrey	1/588
								Teabuge, Joseph-Karl	1/588
							Ratabwi (1/6)	Mae, Cora (Dabana)	1/330
							GN 33/69	Dabana, Daniye	1/660
								Dabana, Delmoran	1/330
								Menke, Delores	1/330
								Baguga, Ballerina	1/1980
								Teabuge, Corazone	1/1980
								Bernicke, Amelia	1/1980
								Aliklik, Shalom	1/1980
							RENATA B (T/TEE)	Bernicke, Rassco	1/1980
							OMINI D (T/TEE)	Dabana, Oscar	1/1980
								Dabana, Pamela	1/330
								Kepae, Pat	1/330
								Dabana, Peter B	1/330
								Dabana, Raeline	1/660

G.N. No.789 / 2016 (cont'd)

								Dabana, Yankee	1/330
								Ratabwi, Tagenor	1/2970
								Ratabwi, Courageous	2/2475
								Ratabwi, Dacor	1/2970
								Ratabwi, Dacron	1/2970
								Ratabwi, Helen	2/2475
								Ratabwi, Joni	1/2970
								Ratabwi Lavender	1/2970
								Ratabwi Leiani	1/1650
								Ratabwi, Louella	1/2970
								Ratabwi, Rae (Lto)	1/2970
								Ratabwi Riot	2/2475
								Ratabwi, Tommy	1/2970
								Ratabwi, Valencia	1/2970
								Amwano, Aloysious	1/120
								Iwugia, Clement	1/120
								Iwugia Kaneaka (Lto)	1/120
								Ratabwi, Syntyche	1/360
								Ratabwi, Tira	1/360
								Ratabwi, Masco	1/360
								Fritz, Lily	1/270
								Fritz, Mathew	1/270
								Fritz, Batsiua	1/810
								Fritz, Precious	1/810
								Fritz, Temaawa (Lto)	1/810

G.N. No.789 / 2016 (cont'd)

								Fritz, Angela	1/1080
								Fritz, Agatha	1/1080
								Fritz, Harper	1/1080
								Fritz, Jana, Diandra	1/1080
								Fritz Justin	1/1080
								Fritz, Tristan	1/1080
								Fritz, Anazale	1/1350
								Fritz, Anazalia	1/1350
								Fritz, Ezra	1/1350
								Fritz, Quinlyn	1/1350
								Fritz, Rioli	1/1350
								Fritz, Cassidy	1/1620
								Jose, Jever, Eidie, B	1/1620
								Fritz, Joseph, M	1/1620
								Fritz, Mahoney	1/1620
								Fritz, Mary.T	1/1620
								Phillip, Twiggy	1/1620
								Fritz, Celestine (Lto)	1/1620
								Gioura, Melita (Lto)	1/1620
								Baker Ruth E	1/2430
								Baker Nicholan T	1/2430
								Baker Callum T	1/2430
								Fritz Gabriel A	1/2430
								Fritz, Max D	1/2430
								Fritz Pender E	1/2430

G.N. No.789 / 2016 (cont'd)

								Baker, Julian T	1/2430
								Baker Hayley E	1/2430
								Baker Xavier T	1/2430
								Fritz, Jade	1/2430
								Fritz, Jimmy	1/2430
								Sosone, Issac	1/2430
								Sosone, Nancy	1/2430
								Sosone, Sisipa	1/2430
								Sosone, Sosone Jnr	1/2430
								Sosone (Lto)	1/2430
								Sosone, Temetiu	1/2430
								Sosone, Vaisava	1/2430
								Gobure, Aisha	1/3240
								Gobure, Jonathan	1/3240
								Dongobir, Darnard	11/4500
								Dongobir, Elisa	11/4500
								Detageouwa, Kathrina	11/4500
								Dongobir, Starret	11/4500
								Dongobir, Tempest	11/4500
								Notte, Xanda	1/2925
								Star, Li-June	1/2925
								Notte, Emma-Joyce	1/2925
								Kepae, Roxy	1/2925
								Notte, Grace (Lto)	1/2925
								Harris, Dillon	1/2925

G.N. No.789 / 2016 (cont'd)

								Harris, Troy	1/2925
								Andre, Raju	1/2925
								Notte, Anderson	1/2925
								Notte, Jechonias	1/2925
								Notte, Shadrach	1/2925
								Notte, Larry	1/2925
								Notte, Michael	1/2925
								Demingauwe Pius	3493/360000
								Demingauwe, Greta	1871/591332
								Demingauwe, Georgina	2929/1080000
								Botelanga, Bernadine	1871/591332
								Botelanga, Danis	242/202893
								Phillip, Twiggy	242/202893
								Demingauwe, De-Silva	3463/360000
								Demingauwe, Joseph	101/24000
								Demingauwe, Shanella	980/362197
								Demingauwe, Eiyagida	11/24000
								Demingauwe, Feyline	3479/1080000
								Demingauwe, Patricia	1871/1182664

G.N. No.789 / 2016 (cont'd)

								Deiye, Serra-Jane	1871/1182664
								Demingauwe, Anthony	989/900000
								Demingauwe, Uma	989/900000
								Demingauwe, Dixie	989/900000
								Demingauwe, Rhiannon	989/900000
								Demingauwe, Edrina	989/900000
Anibare	412	CL	GOWANABA	EIDOGOT	1/2		AKI (1/12)	Teboua, Eiriere	1/108
							GN 45/79	Scotty, Nerema	1/108
								Garabwan, Nei Tam	1/108
								Teboua, Roere	1/108
								Dongobir, Kate	1/108
								Thoma Preston (Lto)	1/108
								Dediya, Zarine	1/144
								Aingimea, Teen (Lto)	1/216
								Akubor, Anthony	1/432
								Cecil, Monisa	1/432
								Akubor, Teresa	1/432
								Akubor, Belson	1/432
								Dediya, Dante	1/432
								Amwano, Deliah	1/432
								Jose, Della	1/432
							DERANGATAMO (1/12)	Akubor, Fiona	7/468

G.N. No.789 / 2016 (cont'd)

							GN 15/80	Akubor, Barbara	1/117
								Akubor, Bernard	1/117
								Akubor, Christopher	1/117
								Heinrich, Emanuela	1/117
								Akubor, Michael	1/117
								Dageago, Plumeria	1/117
								Star, Serafina	1/117
								Akubor, Leominosa	1/117
							DIODAGE (1/12)	Akubor, Andrew	1/21
							GN 12/89	Akubor, Lorna (Lto)	1/28
							EBENAIJE JOHN (1/12)	Akubor, John	1/12
							GN 20/70		
							JULIUS (1/12)	Akubor, Charlie	1/72
							GN 47/74	Ekwona, Presnime (Lto)	1/72
								Jone, Gerard	1/72
								Agigo, Sheena (Lto)	1/72
								Esela, Mari May	199/35280
								Dabwido, Danton	199/35280
								Ketner, Jeslingco	521/105840
								Akubor, Chrishilda	1/432
								Akubor, John Daigon	1/432
								Dediya Rosehilda	1/432

G.N. No.789 / 2016 (cont'd)

								Ketner, Eneasy	1/432
								Abenera Patilda	1/432
							PATRICK (1/12)	Akken, Josepha	1/143
							GN 93/91	Akubor, Christina	1/143
								Akubor, Jean Enart (Lto)	1/143
								Agigo, Maria, Bettina	1/143
								Vulavou, Monica	1/143
								Akubor, Peter	1/143
								Aroi, Mary	1/143
								Stephen, Emiliana	1/143
								Menke, Enid	1/156
								Jeremiah, Jesse	1/572
								Jeremiah, Godfrey	1/572
								Jeremiah, Calistus	1/572
								Grundler, Junko	1/572
								Akubor, Carledette	1/1144
								Akubor, Caroline (Lto)	1/1144
								Botelanga, Charlena	1/1144
								Akubor, Kane	1/1144
								Akubor, Martin	1/1144
								Akubor, Meshach	1/1144
								Akubor, Nash	1/1144
								Akubor, Valesha	1/1144
								Akubor, Baldon	1/1716

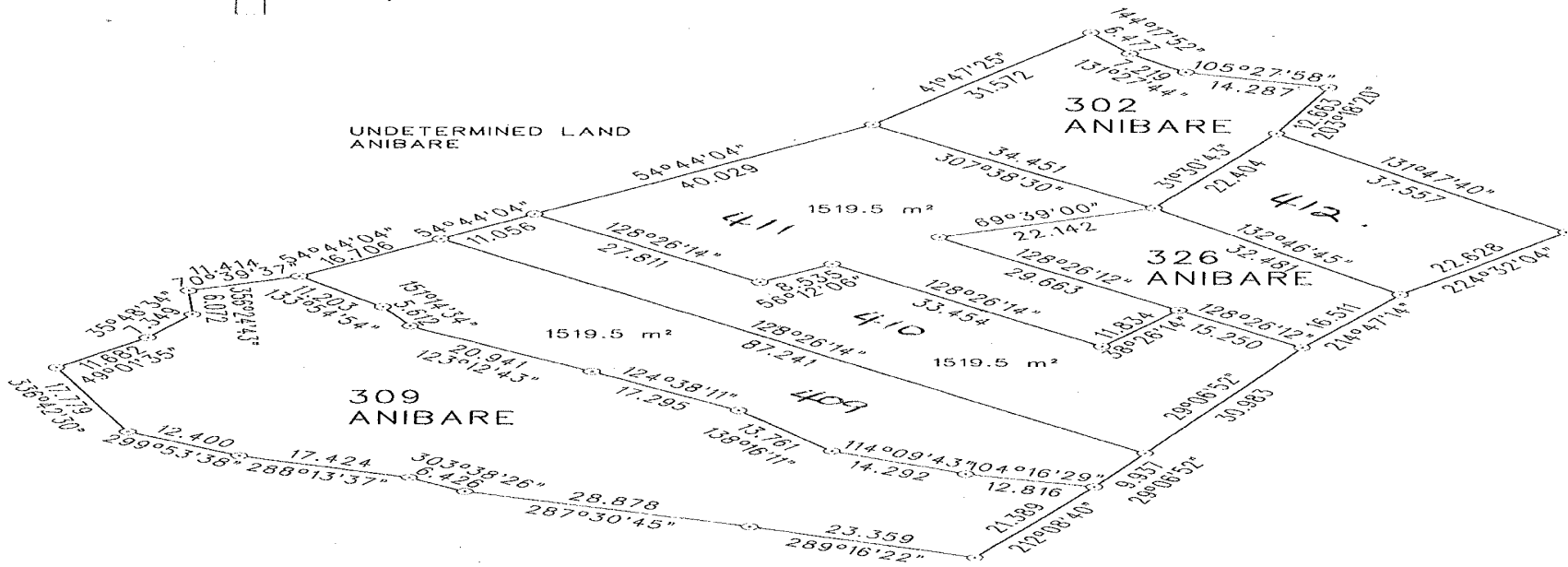
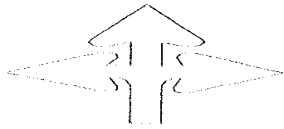
G.N. No.789 / 2016 (cont'd)

								Akubor, Daverick	1/1716
								Akubor, Demascus	1/1716
								Akubor, Gad	1/1716
								Akubor, Loriana	1/1716
								Akubor, Lorina	1/1716
								Akubor, Nora (Lto)	1/1716
								Akubor, Rico	1/1716
								Akubor, Rorina	1/1716
								Akubor, Violet	1/1716
								Daniel, Floriana	1/1716
								Giouba, Florina	1/1716

Note: Those who disagree with the above determination may appeal to the Supreme Court Registry within 21 days of the publication of this government gazettal.

TYRAN CAPELLE
CHAIRPERSON - NAURU LANDS COMMITTEE

G.N. No.789 / 2016 (cont'd)



THIS PLAN IS SUBJECT TO
NAURU LANDS COMMITTEE
APPROVAL

PREPARED BY THE DIRECTORATE OF LANDS & SURVEY

DATE 06/09/2016

DRAWN BY P D NAKAUTOGA

AMENDMENT

Nauru Lands Committee amended G.N 66 notice no. 277 of 1999 due to error of shares.

DELETE:

DISTRICT	PORTION NO	LAND TYPE	LAND NAME	REF	FORMER OWNER	SHARE	PRESENT OWNER	SHARE
Buada	396	C.L	Iyaranapo	Land Reg.	Inin Billeam	All	Joan Moses	1/7
				Book 1928			Eidagauwe Clodumar	1/7
				Page 17			Sam Billeam	1/7
							Nikodemus Billeam	1/7
							Damo Erick	1/7
							Gwen Erick	1/7
							Randal Gadabu	1/7

INSERT:

DISTRICT	PORTION NO	LAND TYPE	LAND NAME	REF	FORMER OWNER	SHARE	PRESENT OWNER	SHARE
Buada	396	C.L	Iyaranapo	Land Reg	Inin Billeam	All	Joan Moses	1/6
				Book 1928			Eidagauwe Clodumar	1/6
				Page 17			Sam Billeam	1/6
							Nikodemus Billeam	1/6
							Damo Erick	1/12
							Gwen Erick	1/12
							Randal Gadabu	1/6

NOTE: Those who disagree with the above land determination may appeal to the Supreme Court Registry within 21 days of the publication of this Government Gazette Notice.

TYRAN CAPELLE
CHAIRPERSON - NAURU LANDS COMMITTEE