



REPUBLIC OF NAURU
GOVERNMENT GAZETTE

Published by Authority
EXTRAORDINARY

PARLIAMENTARY COUNSELLOR
(1)

No. 87

10th October 1997

G.N. No. 394/1997

LAND DETERMINATION

The Nauru Lands Committee hereby determines the ownership of certain land or shares in land as being that shown hereunder :-

<u>DISTRICT</u>	<u>PORT. NO.</u>	<u>TYPE OF LAND</u>	<u>NAME OF LAND</u>	<u>REFERENCE</u>	<u>FORMER OWNER</u>	<u>SHARE</u>	<u>PRESENT OWNERS</u>	<u>SHARE</u>
Menen	416	p.l.	Ijonota	Land Reg. Book 1928 Page 145	Garawa (dec'd)		Tararo Harris	1/24
					Einungtsi (dec'd)	1/2	Lily Dowdi	1/24
					Aidowong (dec'd)		Eibididena Gadeanang	1/72
					Baru (dec'd)	1/2	Eidinigabo Giouba	1/72
							Goldenia Gadeanang	1/576
							Ledward Scotty	1/576
							Zacharias Scotty	1/576
							Julie Diema	1/576
							Jannie Scotty	1/576
							James Scotty	1/576
							Robert Scotty	1/576
							Ricky Scotty	1/576
							Grace Dabwido	1/144
		Kim Canon	1/144					
		Madang Baguga	1/144					
		Nerina Apin	1/432					

G.N.No.394/1997 (cont'd)

<i>Nelina Baguga</i>	1/432
<i>Ken Baguga</i>	1/432
<i>Susanne Baguga</i>	1/576
<i>Rocco Baguga</i>	1/576
<i>Roda Baguga</i>	1/576
<i>Veronica Kepae (LTO)</i>	1/576
<i>Adios Detageouwa</i>	1/1008
<i>Anna Detageouwa</i>	1/1008
<i>Fabia Detageouwa</i>	1/1008
<i>Handsome Detageouwa</i>	1/1008
<i>Jolinda Adam</i>	1/1008
<i>Sheeba Akubor</i>	1/1008
<i>Daiwea Detageouwa (LTO)</i>	1/1008
<i>Terintake Kosam</i>	1/72
<i>Miriam Deidenang</i>	1/72
<i>Ronay Daoouo</i>	1/72
<i>Nei Bota Kosam (LTO)</i>	1/72
<i>Mylle Diema</i>	1/18
<i>Vivian Depoudu</i>	1/180
<i>Eidiniga Depoudu</i>	1/180
<i>Gama Depoudu</i>	1/180
<i>Joshua Depoudu</i>	1/180
<i>Kiosi Depoudu</i>	1/180
<i>Leslie Depoudu</i>	1/180
<i>Lucas Depoudu</i>	1/180
<i>Robin Depoudu</i>	1/180
<i>Belinda Ratabwiy</i>	1/180
<i>Kamwakin Depoudu (LTO)</i>	1/180
<i>Tsibanga Kakiouwea</i>	1/12

No. 87.

10th October, 1997

Nauru

G.N.No.394/1997 (cont'd)

<i>Jenny Canon</i>	1/12
<i>Warrant Engabate</i>	1/4
<i>Anika Amwano</i>	1/40
<i>Jean Batsiua</i>	1/40
<i>Airiu Temaki</i>	1/40
<i>Anthony Temaki</i>	1/40
<i>Hamray Temaki</i>	1/40
<i>John Temaki</i>	1/40
<i>Retin Temaki</i>	1/40
<i>Sina Temaki</i>	1/40
<i>Eideramira Temaki</i>	1/40
<i>Salome Temaki (LTO)</i>	1/40
<i>Helen Dageago</i>	1/200
<i>Norma Grundler</i>	1/200
<i>Zenda Lusama</i>	1/200
<i>Kendrick Temaki</i>	1/200
<i>Styphen Temaki</i>	1/200

NOTE: Those who disagree with the above Land Determination may appeal to the Supreme Court Registry within 21 days of the publication of this Government Gazette Notice.

LESLIE ADAM
CHAIRMAN
NAURU LANDS COMMITTEE

G.N.No.395/1997

G.N.No. 395 /1997

LAND DETERMINATION

The Nauru Lands Committee hereby determines the ownership of certain land or shares in land as being that shown hereunder :-

<u>DISTRICT</u>	<u>PORT. NO.</u>	<u>TYPE</u> <u>OF</u> <u>LAND</u>	<u>NAME OF LAND</u>	<u>REFERENCE</u>	<u>FORMER OWNER</u>	<u>SHARE</u>	<u>PRESENT OWNERS</u>	<u>SHARE</u>
Menen	445	p.l.	Tararo	Land Reg. Book 1928 Page 145	Garawa (dec'd) Einungtsi (dec'd) Aidowong (dec'd) Baru (dec'd)	1/2	Tararo Harris	1/24
							Lily Dowdi	1/24
							Eibididena Gadeanang	1/72
							Eidinigabo Giouba	1/72
							Goldenia Gadeanang	1/576
							Leaward Scotty	1/576
							Zacharias Scotty	1/576
							Julie Diema	1/576
							Jannie Scotty	1/576
							James Scotty	1/576
							Robert Scotty	1/576
							Ricky Scotty	1/576
							Grace Dabwido	1/144
							Kim Canon	1/144
							Madang Baguga	1/144
							Nerina Apin	1/432
							Nelina Baguga	1/432
							Ken Baguga	1/432
							Susanne Baguga	1/576
							Rocco Baguga	1/576
Roda Baguga	1/576							
Veronica Kepae (LTO)	1/576							
Adios Detageouwa	1/1008							

G.N.No.395/1997 (cont'd)

<i>Anna Detageouwa</i>	1/1008
<i>Fabia Detageouwa</i>	1/1008
<i>Handsome Detageouwa</i>	1/1008
<i>Jolinda Adam</i>	1/1008
<i>Sheeba Akubor</i>	1/1008
<i>Daiwea Detageouwa (LTO)</i>	1/1008
<i>Terintake Kosam</i>	1/72
<i>Miriam Deidenang</i>	1/72
<i>Ronay Daaooe</i>	1/72
<i>Nei Bota Kosam (LTO)</i>	1/72
<i>Mytle Diema</i>	1/18
<i>Vivian Depoudu</i>	1/180
<i>Eidiniga Depoudu</i>	1/180
<i>Gama Depoudu</i>	1/180
<i>Joshua Depoudu</i>	1/180
<i>Kiosi Depoudu</i>	1/180
<i>Leslie Depoudu</i>	1/180
<i>Lucas Depoudu</i>	1/180
<i>Robin Depoudu</i>	1/180
<i>Belinda Ratabwiy</i>	1/180
<i>Kamwakin Depoudu (LTO)</i>	1/180
<i>Tsibanga Kakiouwea</i>	1/12
<i>Jenny Canon</i>	1/12
<i>Warrant Engabate</i>	1/4
<i>Anika Amwano</i>	1/40
<i>Jean Batsiua</i>	1/40
<i>Airiu Temaki</i>	1/40
<i>Anthony Temaki</i>	1/40
<i>Hamray Temaki</i>	1/40

G.N.No.395/1997 (cont'd)

John Temaki	1/40
Retin Temaki	1/40
Sina Temaki	1/40
Eideramira Temaki	1/40
Salome Temaki (LTO)	1/40
Helen Dageago	1/200
Norma Grundler	1/200
Zenda Lusama	1/200
Kendrick Temaki	1/200
Styphen Temaki	1/200

NOTE: Those who disagree with the above Land Determination may appeal to the Supreme Court Registry within 21 days of the publication of this Government Gazette Notice.

LESLIE ADAM
CHAIRMAN NAURU LANDS COMMITTEE

G.N. No.396/1997

LAND DETERMINATION

The Nauru Lands Committee hereby determines the ownership of certain land or shares in land as being that shown hereunder :-

<u>DISTRICT</u>	<u>PORT. NO.</u>	<u>TYPE OF LAND</u>	<u>NAME OF LAND</u>	<u>REFERENCE</u>	<u>FORMER OWNER</u>	<u>SHARE</u>	<u>PRESENT OWNERS</u>	<u>SHARE</u>
Menen	425	p.l.	Eatobu	Land Reg. Book 1928 Page 99.	Ebeyong Dedongo (dec'd)	1/2	Okina Detabene	1/40
							Ataro Detabene	1/160
							Etounar Detabene	1/160
							MonMay Detabene	1/160
							Nidiera Detabene	1/160
							Jennie Capelle	1/160
							Bennie Harris	1/160
							Lowanda Detenamo	1/1440
							Mesrick Harris	1/1440

G.N.No.396/1997 (cont'd)

<i>Barret Harris</i>	1/1446
<i>Manna Harris</i>	1/1446
<i>Lincoln Harris</i>	1/1446
<i>Meta Harris</i>	1/1446
<i>Klenny Harris</i>	1/1446
<i>Shaquille Harris</i>	1/1446
<i>Gloria Harris(LTO)</i>	1/1446
<i>Rejoice Agir</i>	1/1126
<i>Vance Harris</i>	1/1126
<i>Lance Harris</i>	1/1126
<i>ReVance Harris</i>	1/1126
<i>France Harris</i>	1/1126
<i>LaVance Harris</i>	1/1126
<i>Esmeralda Harris (LTO)</i>	1/1126
<i>Maris Deireragea</i>	1/160
<i>Craven Detabene</i>	1/160
<i>WeJune Detabene</i>	1/160
<i>Maina Detabene</i>	1/160
<i>Goded Keitsito</i>	1/200
<i>James Keitsito</i>	1/800
<i>Orlando Keitsito</i>	1/800
<i>Subia Keitsito</i>	1/800
<i>Suzen Keitsito</i>	1/800
<i>Rayong Itsimaera</i>	1/800
<i>Dimede Itsimaera (LTO)</i>	1/800
<i>Carmichael Scotty</i>	1/8006
<i>Jacko Scotty</i>	1/8006
<i>Rosilia Adam</i>	1/8006
<i>Amanda Scotty</i>	1/8006

No. 87.

10th October, 1997

Nauru

G.N.No. 396/1997 (cont'd)

<i>Anderson Scotty</i>	<i>1/8006</i>
<i>Borben Scotty</i>	<i>1/8006</i>
<i>Vee J. Scotty</i>	<i>1/8006</i>
<i>Losinda Scotty</i>	<i>1/8006</i>
<i>Rosina Scotty</i>	<i>1/8006</i>
<i>Camilo Scotty (LTD)</i>	<i>1/8006</i>
<i>Eden Agege</i>	<i>1/1406</i>
<i>Carrie Akua</i>	<i>1/1406</i>
<i>Brett Demauna</i>	<i>1/1406</i>
<i>Lena Demauna</i>	<i>1/1406</i>
<i>Jefferson Demauna</i>	<i>1/1406</i>
<i>Lorinda Demauna</i>	<i>1/1406</i>
<i>Elizabeth Demauna</i>	<i>1/1406</i>
<i>John Dube Jnr.</i>	<i>1/1606</i>
<i>Glenda Depaune</i>	<i>1/1606</i>
<i>Matilda Tatum</i>	<i>1/1606</i>
<i>David Dube</i>	<i>1/1606</i>
<i>Jacob Dube</i>	<i>1/1606</i>
<i>Jeffrey Dube</i>	<i>1/1606</i>
<i>Nelda Deireragea</i>	<i>1/1606</i>
<i>Portinkaura Dube (Est. of)</i>	<i>1/1606</i>
<i>Loretta Mau</i>	<i>1/1046</i>
<i>Cha Dageago</i>	<i>1/1046</i>
<i>Devol Dageago</i>	<i>1/1046</i>
<i>Roumiz Dageago</i>	<i>1/1046</i>
<i>Willen Dageago</i>	<i>1/1046</i>
<i>Corney Dageago</i>	<i>1/1046</i>
<i>Timothy Dageago</i>	<i>1/1046</i>
<i>Dean Dageago</i>	<i>1/1046</i>

G.N.No.396/1997 (cont'd)

<i>Lorency Dageago</i>	<i>1/1046</i>
<i>Marteka Dageago</i>	<i>1/1046</i>
<i>Julary Dageago</i>	<i>1/1046</i>
<i>Edna Adam</i>	<i>1/1046</i>
<i>Alfred Dageago (LTO)</i>	<i>1/1046</i>
<i>Mizpah Detenamo</i>	<i>1/40</i>
<i>Ebura Duburiya</i>	<i>1/160</i>
<i>Thomas Star</i>	<i>1/160</i>
<i>William Star</i>	<i>1/160</i>
<i>Tamaiti Star (LTO)</i>	<i>1/160</i>
<i>Madarina Scotty</i>	<i>1/80</i>
<i>Jesse Duburiya</i>	<i>1/80</i>
<i>Vinson Detenamo</i>	<i>1/520</i>
<i>Dempsey Detenamo</i>	<i>1/520</i>
<i>Ivor Detenamo</i>	<i>1/520</i>
<i>Marjorie Deireragea</i>	<i>1/520</i>
<i>Peter Detenamo</i>	<i>1/520</i>
<i>Thorne Detenamo</i>	<i>1/520</i>
<i>Wade Detenamo</i>	<i>1/520</i>
<i>Marissa Cook</i>	<i>1/520</i>
<i>Tulenoa Detenamo</i>	<i>1/520</i>
<i>Rowan Detenamo</i>	<i>1/520</i>
<i>Marion Garoa</i>	<i>1/520</i>
<i>Marie Eoaeo</i>	<i>1/520</i>
<i>Shane Detenamo</i>	<i>1/520</i>
<i>Zalene Detenamo</i>	<i>1/120</i>
<i>Ben Detenamo</i>	<i>1/120</i>
<i>Zaida Detenamo (LTO)</i>	<i>1/120</i>
<i>Malcome Dame</i>	<i>1/144</i>

No. 87.

10th October, 1997

Nauru

G.N.No.396/1997 (cont'd)

<i>Narrielle Dame</i>	1/144
<i>Rennie Dame</i>	1/144
<i>Priscilla Quadina</i>	1/144
<i>Suzie Kepae</i>	1/144
<i>John Jora Dame</i>	1/720
<i>Sayoko Dame</i>	1/720
<i>Onassis Dame</i>	1/720
<i>Machael Dame</i>	1/720
<i>Josephine Dame (LTO)</i>	1/720
<i>Kelinda Dame</i>	1/48
<i>Timothy Dame</i>	1/48
<i>Lindi Dick</i>	1/48
<i>Roehelle Dageago</i>	1/48
<i>Awaingiy Ran</i>	1/24
<i>Emobwien Paul</i>	1/96
<i>Lorina Aeomwage</i>	1/96
<i>Lee Dageago</i>	1/96
<i>Terrell Dageago</i>	1/96
<i>Lollita Agir</i>	1/384
<i>Palik Agir</i>	1/384
<i>Tosca Agir</i>	1/384
<i>Beverly Agir</i>	1/384
<i>Telson Agir</i>	1/384
<i>Jason Agir</i>	1/384
<i>Ruth Ephraim</i>	1/384
<i>Ann Marie Star</i>	1/384
<i>Julie Dangaro</i>	1/384
<i>Bennie Agir</i>	1/384
<i>Wayne Agir</i>	1/384

G.N.No.396/1997 (cont'd)

Marcus Agir	1/384
Talisa Agir	1/384
Karlik Agir	1/384
Jonathan Agir	1/384
Vinnie Agir	1/1926
Ryliza Agir	1/1926
Randolph Agir	1/1926
Marcus Agir	1/1926
Elizabeth Agir (LTO)	1/1926

Land Reg. Rosie Jose 1/2
 Book 1928 (dec'd)
 Page 99.

Alexander Deiye	1/12
Alvina Aremwa	1/12
Hammersteine Deiye	1/12
Linda Aliklik	1/52
Rosavina Bop	1/52
Louisa Canon	1/52
Abby Deireragea	1/52
Ammi Jose	1/52
Jason Jose	1/52
Nehemia Jose	1/52
Yvonne Jose	1/52
Diana Maaki	1/52
Thamar Jose	1/52
Bernice Jose	1/52
Daimon Stephen	1/52
Nei Boua Jose (LTO)	1/52

NOTE: Those who disagree with the above Land Determination may appeal to the Supreme Court Registry within 21 days of the publication of this Government Gazette Notice.

**LESLIE ADAM
CHAIRMAN**

LAND DETERMINATION

The Nauru Lands Committee hereby determines the ownership of certain land or shares in land as being that shown hereunder:-

<u>DISTRICT</u>	<u>PORT. NO.</u>	<u>TYPE OF LAND</u>	<u>NAME OF LAND</u>	<u>REFERENCE</u>	<u>FORMER OWNER</u>	<u>SHARE</u>	<u>PRESENT OWNERS</u>	<u>SHARE</u>
Menen	429	p.l.	Eatetereni	Land Reg. Book 1928 Page 141	Eigabatsiya (dec'd)	All	Vicky Udire	1/16
							Mary Udire	1/16
							Lucy Udire	1/16
							Sixtus Udire	1/16
							Bernadette Amwano	1/16
							Monica Iga	1/16
							Francesca Benjamin	1/16
							Lorna Kaurai	1/16
							Kainibe Apin	1/8
							Gaeouw Apin	1/8
							Manuella Apin (LTO)	1/8
							Carol Amram	1/56
							Corey Amram	1/56
							Frankie Amram	1/56
							Julie Amram	1/56
June Amram	1/56							
Sankey Amram	1/56							
					Kainibe A. Tee		(Narelle Apin	1/56

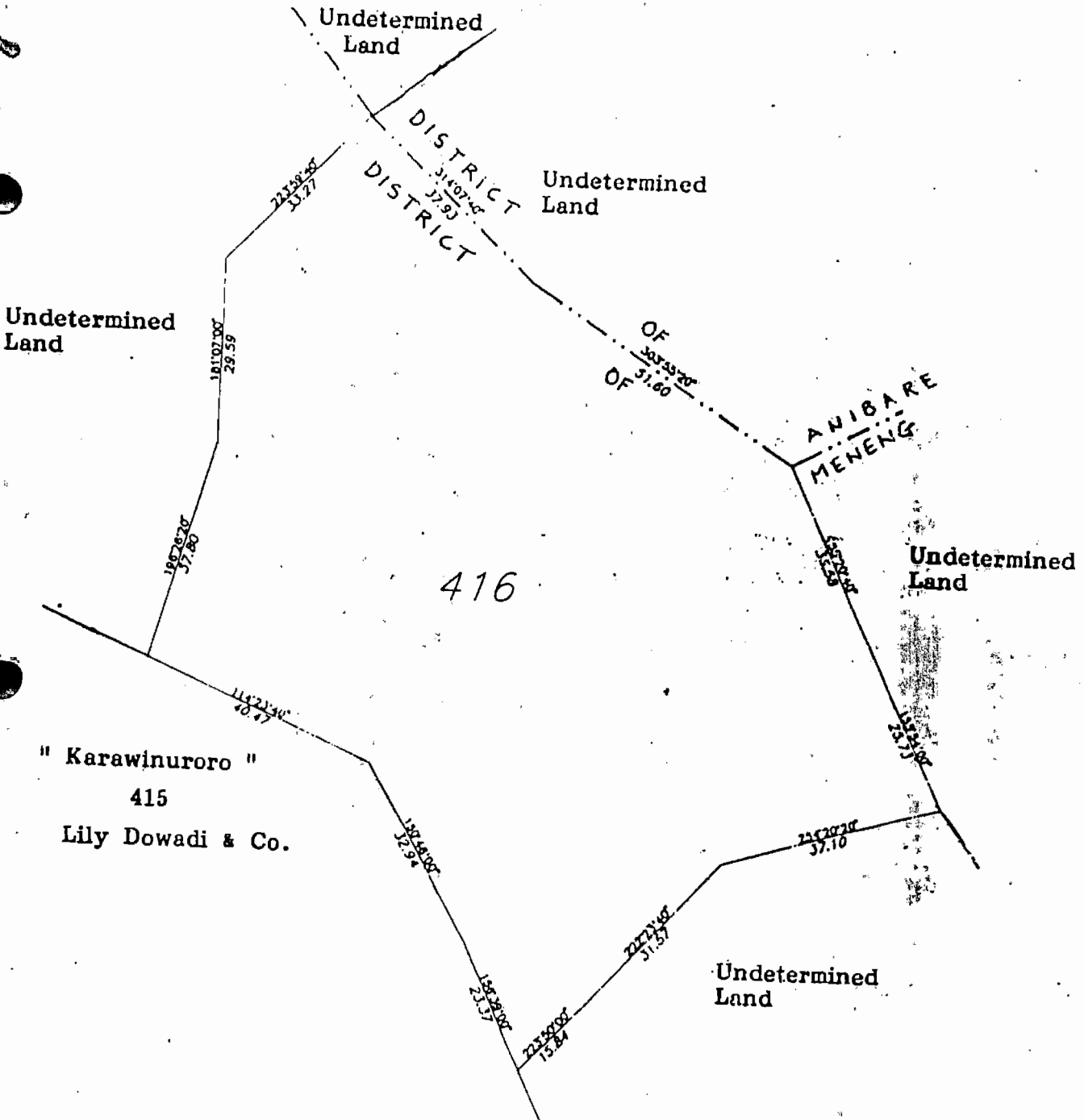
NOTE: Those who disagree with the above Land Determination may appeal to the Supreme Court Registry within 21 days of the publication of this Govern Gazette Notice.

LESLIE ADAM
CHAIRMAN

G.N. NO. 398/1997

DISTRICT OF MENENG

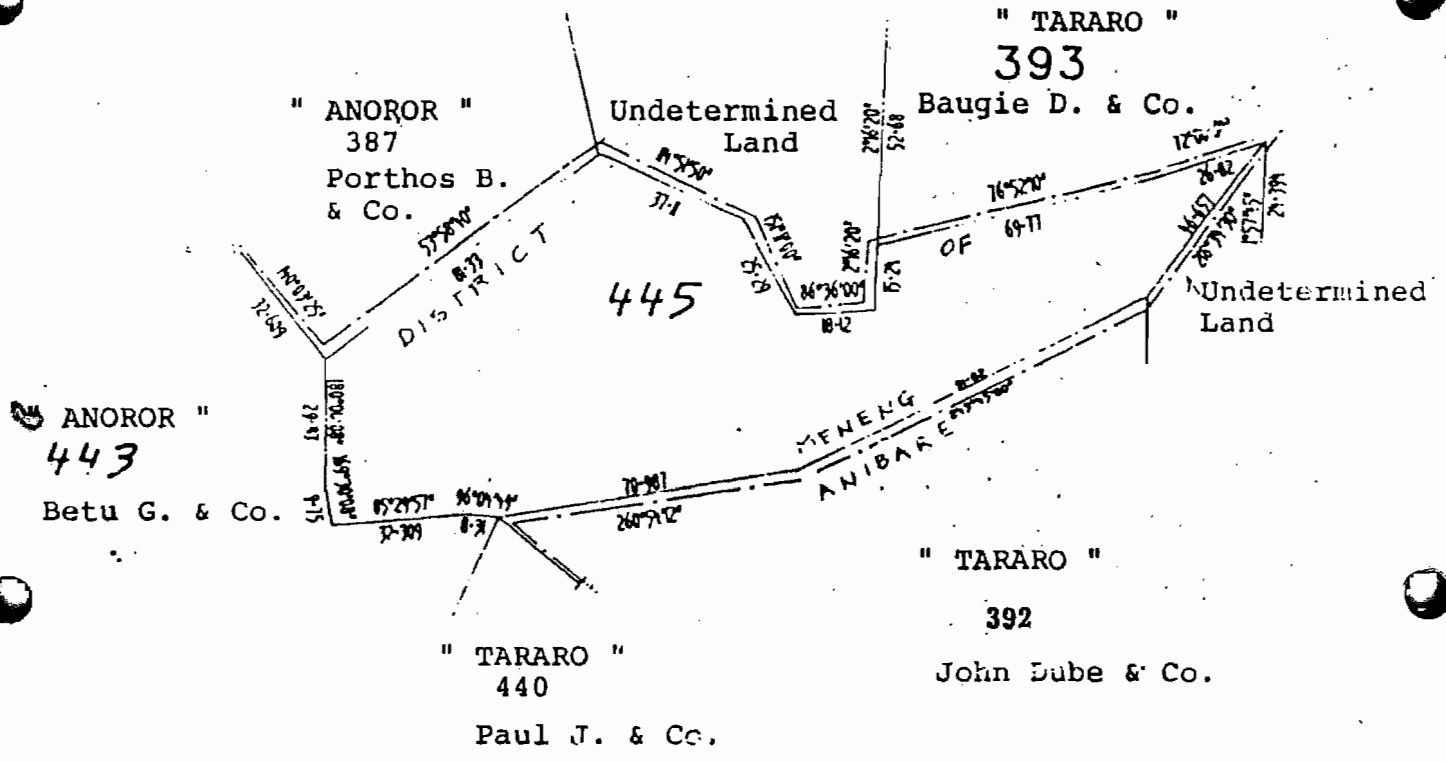
SCALE 1:1000



G.N.No. 399/1997

DISTRICT OF MENENG

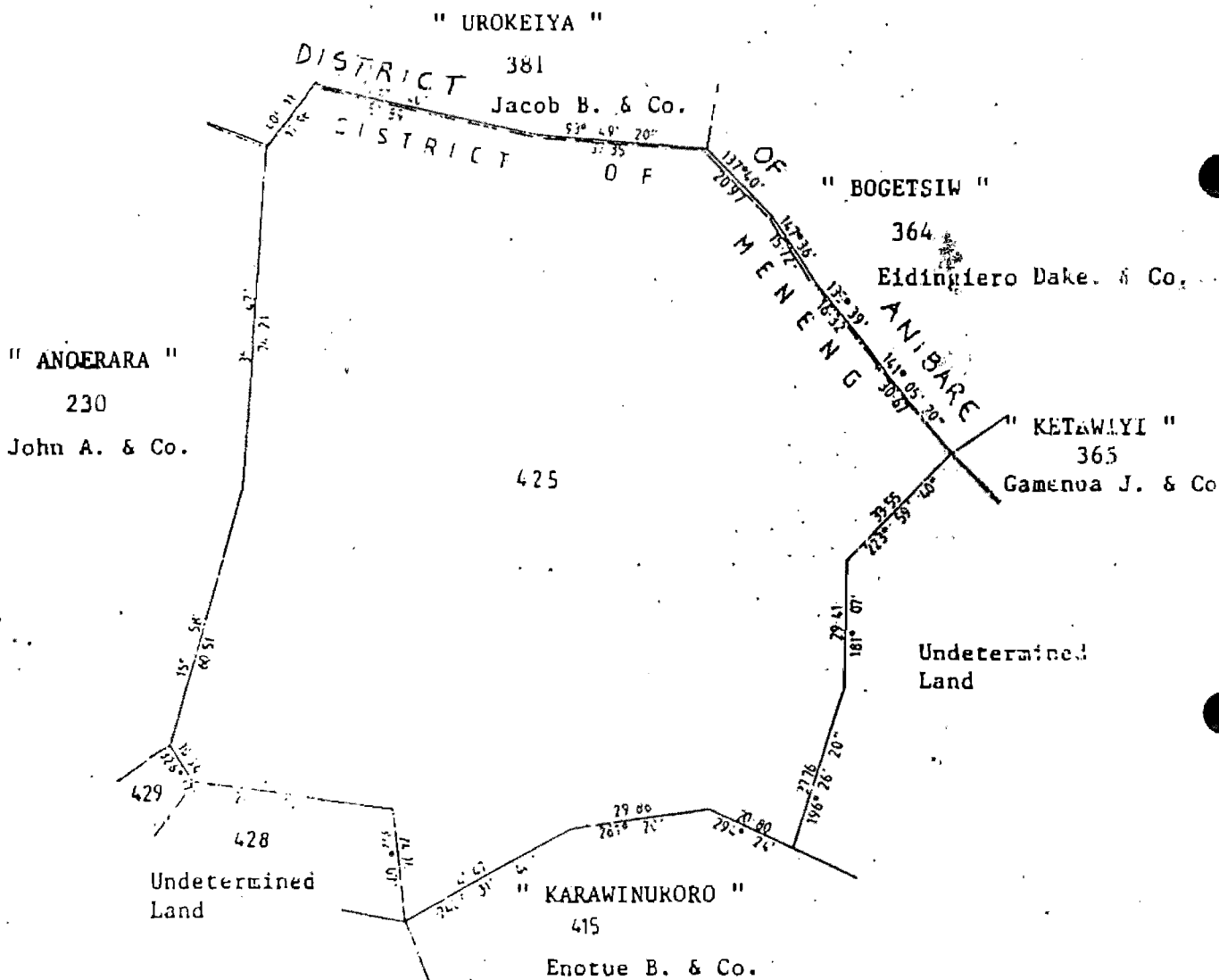
SCALE 1:1750



DISTRICT OF MENEENG

S.N.No.400/1997

SCALE 1:1750



No. 87
G.N.No. 407/1997

10th October 1997
DISTRICT OF MENENG

Nauru

SCALE 1:400

